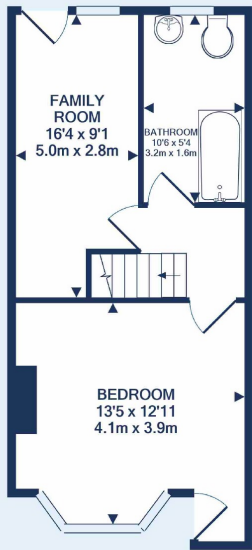




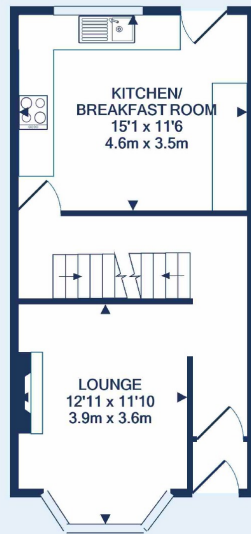
**Montpelier - Guide price £480,000**

4 bed end of terrace house  
33 Banner Road, BS6 5NA

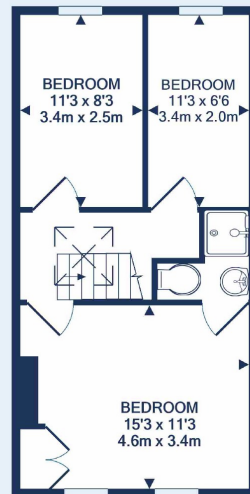




BASEMENT LEVEL



GROUND FLOOR



1ST FLOOR

Made with Metropix ©2020



**A spacious and well presented four bedroom Victorian townhouse located in a quiet residential road in Montpelier.**

**The property is arranged over three floors with a highly flexible layout and has the potential for the lower floor to be a self contained unit. To the rear is a sizeable, low maintenance South facing rear garden.**

**An excellent family home in a highly desirable location.**



**Bishopston Office**

201 Gloucester Road, Bishopston, Bristol,  
BS7 8BG

Call: 0117 9425855

Mail: [bishopstonsales@oceanhome.co.uk](mailto:bishopstonsales@oceanhome.co.uk)

Search: [oceanhome.co.uk](http://oceanhome.co.uk)

References to the Tenure of a Property are based on information supplied by the Seller. The Agent has not had sight of the title documents. Lease details, service ground rent (where applicable) are given as a guide only and should be checked and confirmed by your solicitor prior to exchange of contracts.