



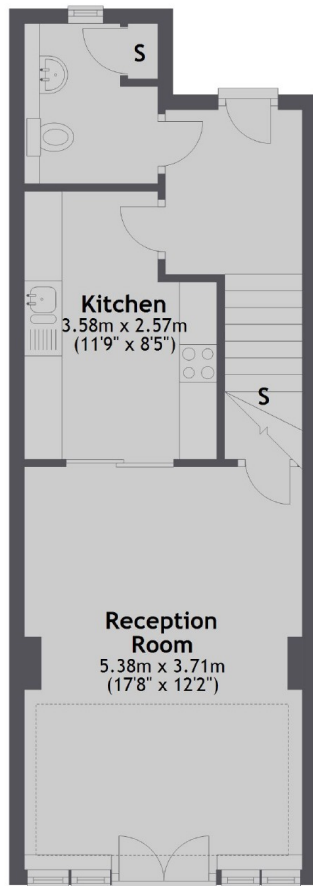
## Hepdon Mews, SW17

£660,000

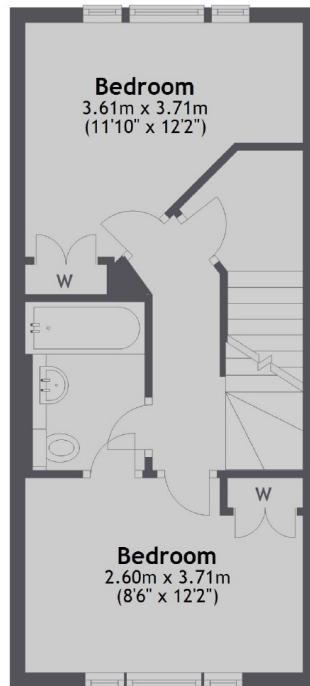
A three bedroom two bathroom modern build house with a sunny private garden and off street parking in a desirable private mews close to Tooting Broadway Tube and St George's Hospital.

- Three Bedrooms
- Two Bathrooms
- Freehold House
- Off Street Parking
- Gated Development
- Chain Free

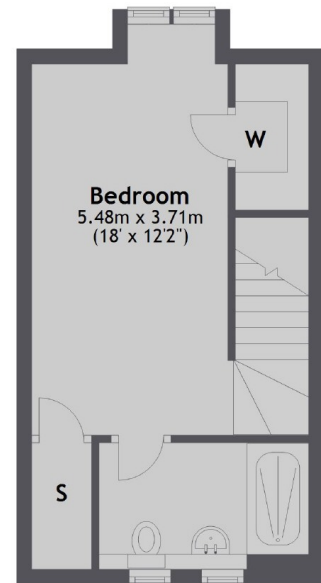
Ground Floor



First Floor



Second Floor



Total area: approx. 97.2 sq. metres (1045.8 sq. feet)

Jacksons Tooting  
26 Tooting Bec Road  
London  
SW17 8BD  
020 8767 0522  
tooting.sales@jacksonsestateagents.com

Energy Rating: We aim to make our particulars both accurate and reliable. However they are not guaranteed; nor do they form part of an offer or contract. If you require clarification on any points then please contact us, especially if you're traveling some distance to view. Please note that appliances and heating systems have not been tested and therefore no warranties can be given as to their good working order.