



Clapham Road, SW9

£500,000

****Guide Price £500,000-£550,000**** A two bedroom fourth floor apartment, located on the quiet and sunny side of a purpose built building close to Stockwell and Clapham North stations.

- Two Double Bedrooms
- Private Balcony
- 21'3 Reception Room
- Close to Tube Stations
- Modern high spec kitchen
- Stylish bathroom

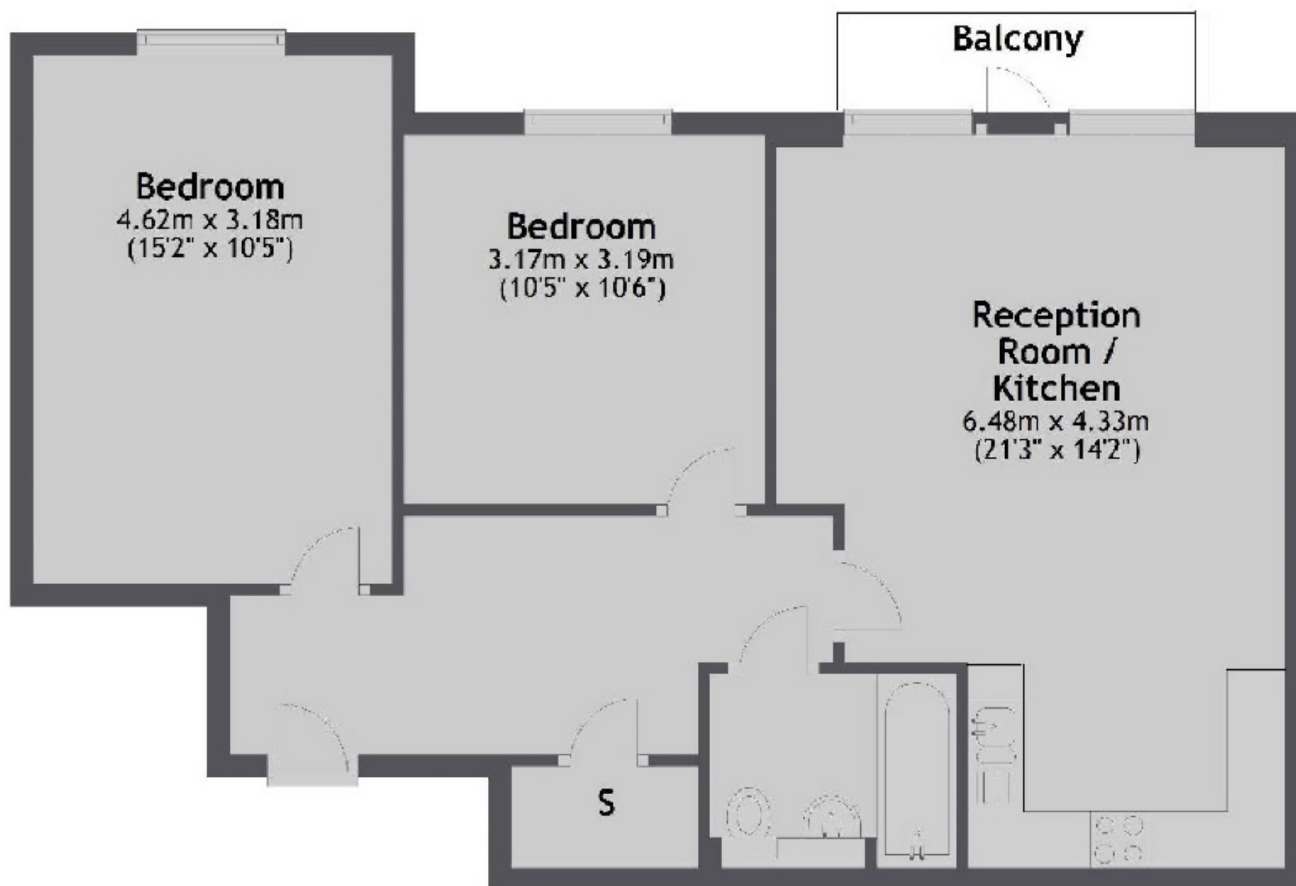


With two generous sized double bedrooms this stylish apartment is located on the favoured westerly side of this purpose built block which is in a fabulously convenient area, yet is quietly positioned at the rear and therefore overlooking a delightful communal and quiet garden. The main reception space is incredibly spacious with a large open plan kitchen/reception room with ample space for dining table and chairs and access to the west facing balcony that enjoys afternoon and evening sun, has space for table and chairs and is exceedingly quiet. The kitchen is modern and has quality fittings plus has fully integrated appliances. The two large bedrooms are served by a spacious bathroom which is high spec. There is a useful airing cupboard in the roomy hallway. There is a secure entry phone system and lift in the building too.

Located at the rear of a building on Clapham Road, the property is just 0.2 miles away from Clapham North tube station and the Northern line; and 0.4 miles from Stockwell tube station and the Victoria Line. Clapham North offers shops, bars and restaurants amongst other amenities.



Fourth Floor



Total area: approx. 65.5 sq. metres (705.0 sq. feet)

Jacksons Clapham
73 Abbeville Road
London
SW4 9JN
020 8875 7995
clapham.sales@jacksonsestateagents.com

Energy Rating: B We aim to make our particulars both accurate and reliable. However they are not guaranteed; nor do they form part of an offer or contract. If you require clarification on any points then please contact us, especially if you're traveling some distance to view. Please note that appliances and heating systems have not been tested and therefore no warranties can be given as to their good working order.