

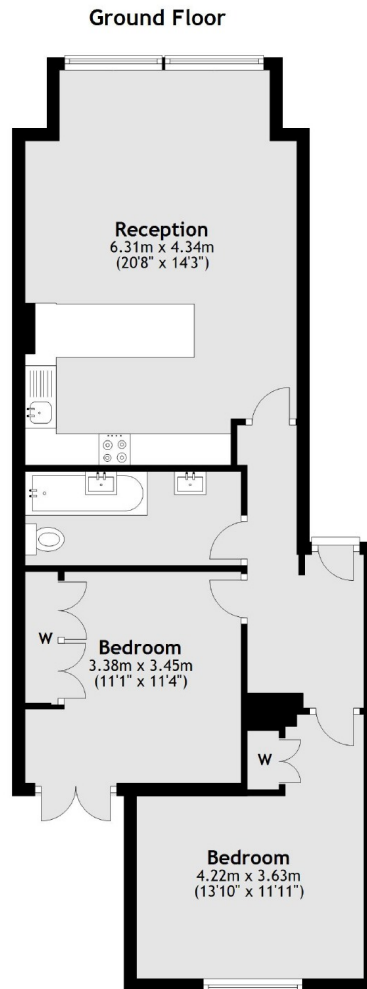


## Elmbourne Road, SW17

£700,000

A ground floor garden flat in the highly sought after Heaver Estate. This property comprises two double bedrooms with fitted wardrobes, a modern bathroom and a light, open plan kitchen, living and dining area, perfect for entertaining. The property also benefits from a private South facing garden.

- Heaver Estate
- Two Double Bedrooms
- Open Plan Living
- Victorian Conversion
- Modern Finish
- South Facing Garden



Total area: approx. 62.9 sq. metres (676.7 sq. feet)

Jacksons Balham  
8-11 Balham Station Road  
London  
SW12 9SG  
020 8675 6555  
[balham.sales@jacksonsstateagents.com](mailto:balham.sales@jacksonsstateagents.com)

Energy Rating: D We aim to make our particulars both accurate and reliable. However they are not guaranteed; nor do they form part of an offer or contract. If you require clarification on any points then please contact us, especially if you're traveling some distance to view. Please note that appliances and heating systems have not been tested and therefore no warranties can be given as to their good working order.