



HEAD OFFICE:
14 Claughton Street
St Helens, WA10 1RS
TEL: 01744 24341
sthelens@johnbrowns.co.uk
www.johnbrowns.co.uk



College Street, St. Helens, WA10 1TP

We are pleased to offer for let this two bedroom first floor apartment which is situation close to town centre. The property benefits from central heating and being UPVc double glazed and briefly comprises of: entrance hallway, open plan lounge and kitchen, two good sized bedrooms, and a family shower room. Viewing is highly recommended to appreciate the condition and finish of this property and can be arranged through our office or by calling 01744 24341.

- First Floor Apartment
- Central Heating
- Viewing Highly Recommended
- Two Bedrooms
- UPVc Double Glazed
- EPC: D
- Open Plan Lounge and Kitchen
- Close to Town Centre

£500 Per Month

Entrance Hallway

Door to communal hallway, and laminate flooring.

Lounge and Kitchen Area

597 x 415 (181.97m x 126.49m)

Two UPVc double glazed windows to front aspect, laminate flooring and radiator.

Kitchen area- range of wall and base units, plumbed for automatic washing machine, integral electric oven and hob with overhead extractor fan, and stainless steel sink unit,.

Bedroom One

19'7" x 7'10" (5.97 x 2.40)

UPVc Double glazed window to front aspect, and radiator.

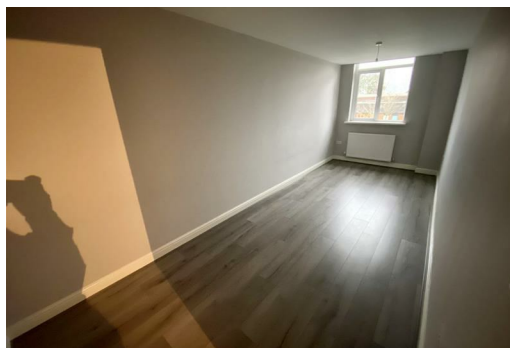
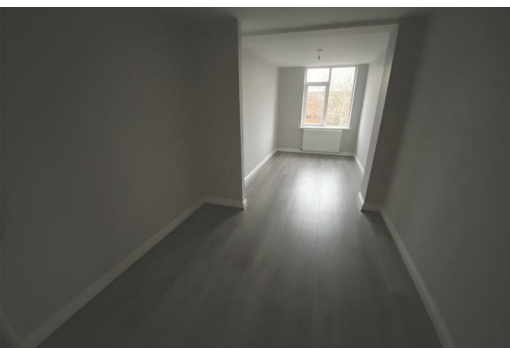
Bedroom Two

19'1" x 6'11" (5.83 x 2.11)

UPVc Double glazed window to front aspect, and radiator.

Shower Room

Stand in shower cubicle, low level wc, pedestal hand wash basin, laminate flooring, and heated towel rail.







Energy Efficiency Rating		
	Current	Potential
Very energy efficient - lower running costs		
(92 plus) A		
(81-91) B		
(69-80) C		
(55-68) D	58	70
(39-54) E		
(21-38) F		
(1-20) G		
Not energy efficient - higher running costs		
England & WalesEU Directive 2002/91/EC		
Environmental Impact (CO ₂) Rating		
	Current	Potential
Very environmentally friendly - lower CO ₂ emissions		
(92 plus) A		
(81-91) B		
(69-80) C		
(55-68) D		
(39-54) E		
(21-38) F	51	68
(1-20) G		
Not environmentally friendly - higher CO ₂ emissions		
England & WalesEU Directive 2002/91/EC		