



- Freehold semi-detached house
- Over 30ft rear garden
- Potential to extend (STPP)
- Period features

Wolsey Road, Hampton Hill

A stunning semi-detached Victorian family home in sought after location close to Hampton Hill High Street.

£645,000



Property Description

A stunning semi-detached Victorian family home in sought after location close to Hampton Hill High Street. The property benefits from many of the features you would expect from a property of this age including high ceilings, sash windows, feature fireplaces and original wood flooring. The living space on the ground floor comprises of a well proportioned bay-fronted reception room, dining room, kitchen and downstairs bathroom. On the first floor there are two double bedrooms and a study. Further benefits include a private rear garden stretching over 30ft and the potential to extend (subject to planning permission and the usual consents).

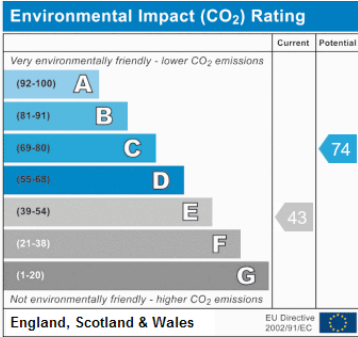
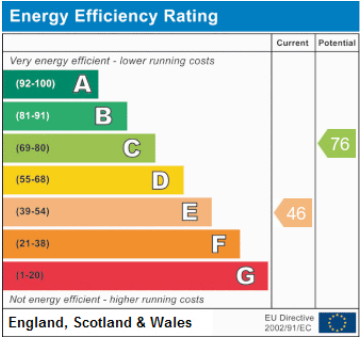
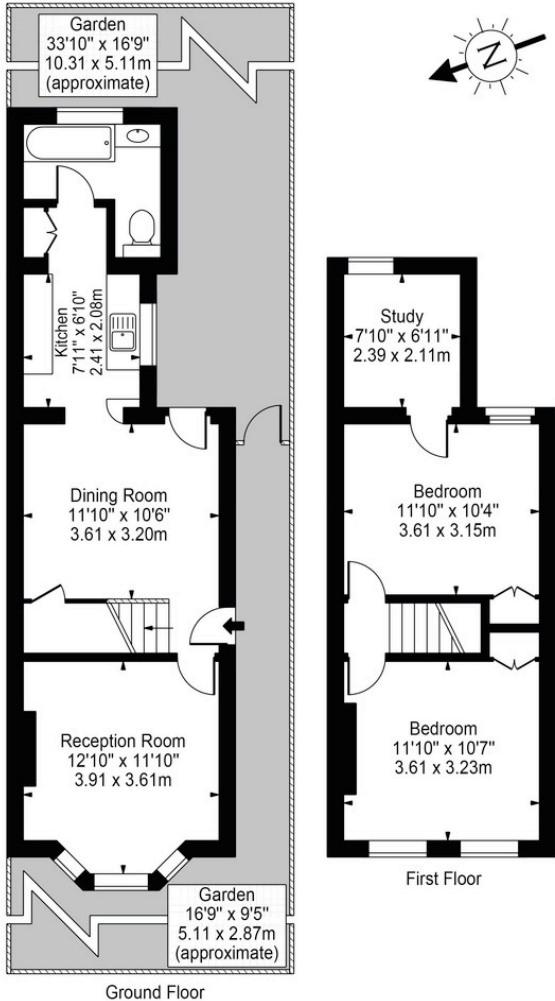


Location

Wolsey Road is a highly sought after and very convenient location being close to the Hampton Hill High street with its vast array of shops, bars and restaurants. Fulwell Station and Bushy Park are close by along with some outstanding local schools.



Wolsey Road, TW12
Approx. Gross Internal Area 800 Sq Ft - 74.32 Sq M



For Illustration Purposes Only - Not To Scale Floor Plan by Mira Nikolova Photography

This floor plan should be used as a general outline for guidance only and does not constitute in whole or in part an offer or contract.

Any intending purchaser or lessee should satisfy themselves by inspection, searches, enquiries and full survey as to the correctness of each statement.

Any areas, measurements or distances quoted are approximate and should not be used to value a property or be the basis of any sale or let.

www.griffinstevens.co.uk
020 8979 1597
enquiries@griffinstevens.co.uk

Agents Note: Whilst every care has been taken to prepare these sales particulars, they are for guidance purposes only. All measurements are approximate and are for general guidance purposes only and whilst every care has been taken to ensure their accuracy, they should not be relied upon and potential buyers are advised to recheck the measurements