

# FLETCHERS

ESTATE AGENTS



## Saville Road, W4

£880,000

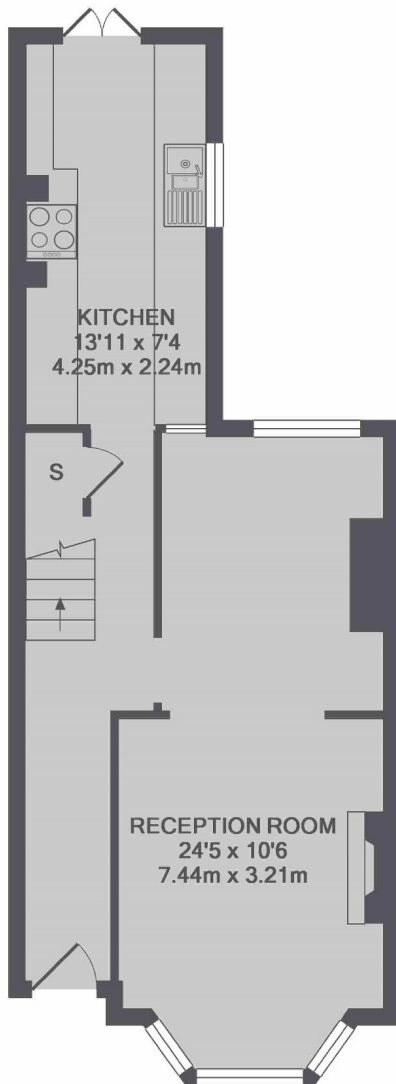
A mid-terraced home that has potential to extend (STPP). Currently, two bedrooms are accompanied by a family bathroom. Downstairs, a spacious double reception room and a kitchen leading out to the private garden.

Saville Road is a popular residential road just north of Chiswick Park and Turnham Green. With a fantastic array of shops, restaurants and cafés available on Chiswick High Road within a short walk.

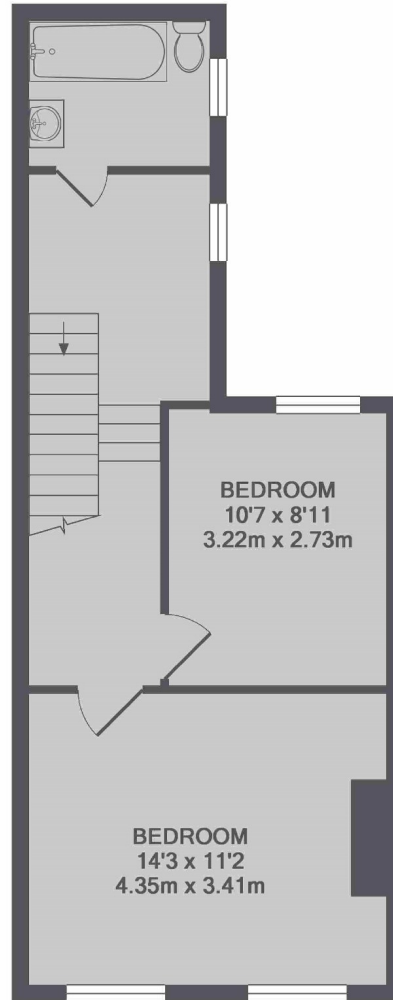
- Two Bedrooms • Double Reception • Separate Kitchen • Potential To Extend • Garden • No Onward Chain •

# FLETCHERS

ESTATE AGENTS



GROUND FLOOR



1ST FLOOR

TOTAL APPROX. FLOOR AREA 872 SQ.FT. (81.0 SQ.M.)

Fletchers Chiswick Turnham Green Sales  
58 Turnham Green Terrace, London, W4 1QP  
020 8987 3000  
[chiswicksales@fletcherestates.com](mailto:chiswicksales@fletcherestates.com)

Energy Rating: E. We aim to make our particulars both accurate and reliable. However they are not guaranteed; nor do they form part of an offer or contract. If you require clarification on any points then please contact us, especially if you're traveling some distance to view. Please note that appliances and heating systems have not been tested and therefore no warranties can be given as to their good working order.