



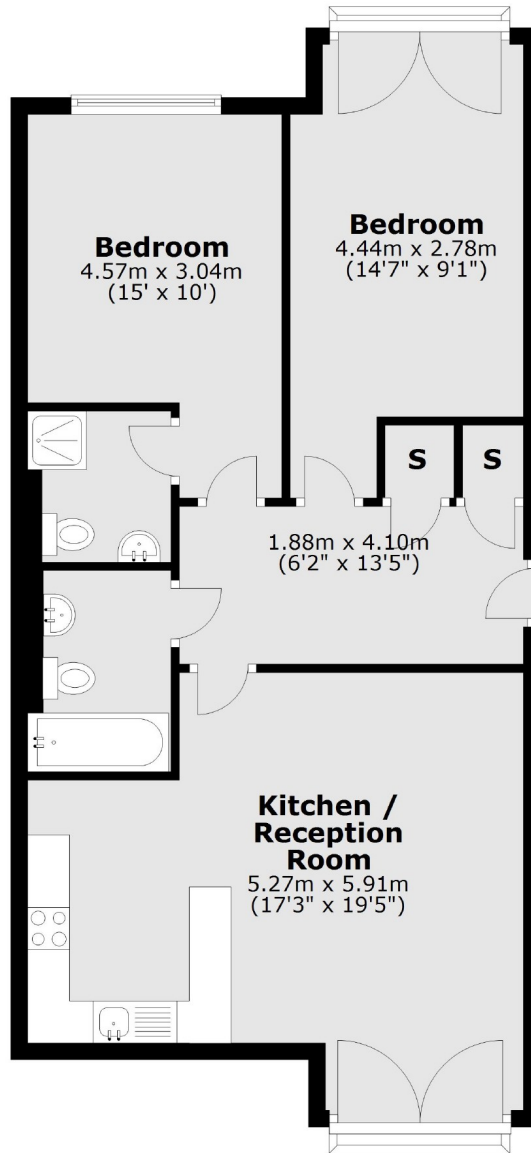
Holland Gardens, TW8

£403 pw (£1,750 pcm)

A modern two double bedroom apartment with two bathrooms (one ensuite), wood flooring, residents gym and allocated underground parking. The property is offered furnished and has been finished to a high standard throughout.

Holland Gardens is a private road located close to Brentford High Street, a selection of bus routes and also local attractions such as The Musical Museum and The London Steam Museum. The

Fifth Floor



Total area: approx. 69.3 sq. metres (745.4 sq. feet)

Robertson Smith & Kempson Northfields Lettings
116 Northfield Avenue, London,
W13 9RT
020 8280 2800
northfieldslettings@robertsonsmithandkempson.co.uk

Energy Rating: . We aim to make our particulars both accurate and reliable. However they are not guaranteed; nor do they form part of an offer or contract. If you require clarification on any points then please contact us, especially if you're traveling some distance to view. Please note that appliances and heating systems have not been tested and therefore no warranties can be given as to their good working order.