



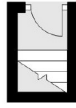
Weir Road, SW12

£750,000

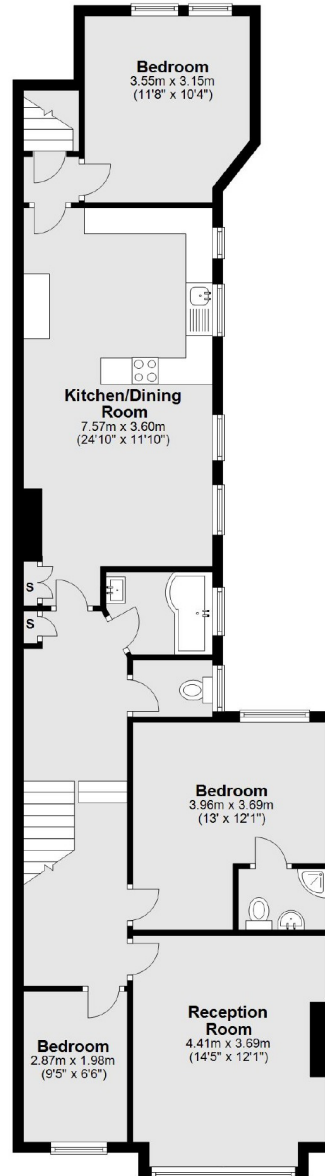
An attractive three bedroom, first floor Victorian maisonette situated in Central Balham. The property also comprises; a private garden, a separate reception room, eat-in kitchen and it's own private entrance.

- Three Bedrooms
- Central Balham
- First Floor
- Victorian Maisonette
- Private Garden
- Eat-in Kitchen

Ground Floor



First Floor



Total area: approx. 102.5 sq. metres (1103.3 sq. feet)

Jacksons Balham
8-11 Balham Station Road
London
SW12 9SG
020 8675 6565
balham.sales@jacksonsstateagents.com

Energy Rating: D We aim to make our particulars both accurate and reliable. However they are not guaranteed; nor do they form part of an offer or contract. If you require clarification on any points then please contact us, especially if you're traveling some distance to view. Please note that appliances and heating systems have not been tested and therefore no warranties can be given as to their good working order.