





Features

- Beautifully Decorated & Presented
- Upgrades & Optional Extras Worth £15,000
- Elegant & Versatile Living Space
- Four Bedrooms
- Two Luxury Bath/Shower Rooms

A superb, detached FREEHOLD home built by Redrow Homes to their Cambridge design. If you are looking for a four bedroom house that is designed with both practicality and style at its core, then this one is sure to impress. The property is filled with all of the latest features that the

modern family could need, while the contemporary, elegant interior means you can enjoy it in luxury. A marvelous en-suite to the master bedroom, generous garage, and separate utility and cloak rooms are just some of the details that make evident the careful thought that has gone into the design

of the property. From the open plan family area, to the sophistication and sanctuary of the lounge, The property offers a superb balance between family life and personal space. If you long for an executive home at a reasonable price, then look no further than this charming property.



The property has been significantly improved by the current owners and is decorated and presented to an extremely high standard and includes an extensive list of optional extras and upgrades that total over £15,000.

Hartford is a bustling Cheshire village with an excellent range of local facilities including a hub of shops at its centre, offering everything you could want or need. There are three public house's in the village, The Red Lion, The Coachman and the recently renovated Hartford Hall Hotel, in addition there are two wine bars/bistros; Chime, located in the heart of the village and The Hart of Hartford, which is located on School Lane.

Two railway stations serve the village with the West Coast Main Line service running through Hartford, enabling access to London within two hours. Trains to Manchester and Chester run from Greenbank station. The A556 and A49 easily facilitate access to the region's major road network with Manchester and Liverpool airports both within 20 miles.

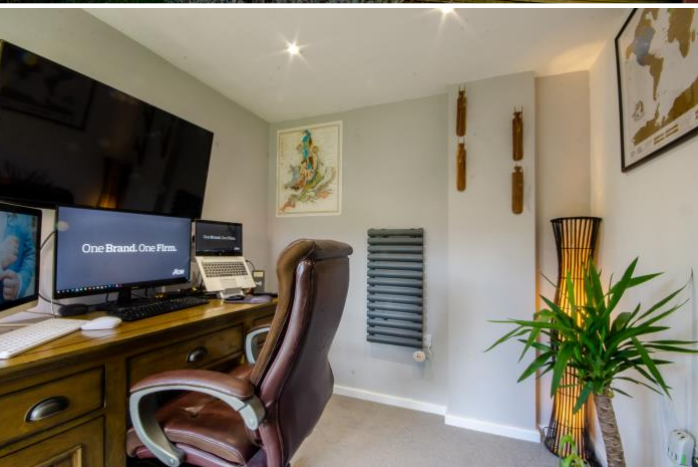




Above all, where Hartford really excels is its range of excellent schools, interestingly there are roughly the same number of students attending the numerous schools in the village as inhabitants. The well regarded Grange private school is less than a mile away and both Hartford High and St Nicholas Catholic High School are within walking distance as are the four village primary schools; Hartford Primary School, St Wilfred's Catholic Primary School, Hartford Manor Community School and the private Grange primary School.

Nearby Northwich caters for a more comprehensive range of amenities, including leading supermarkets with Waitrose, Sainsbury's and Tesco all represented.

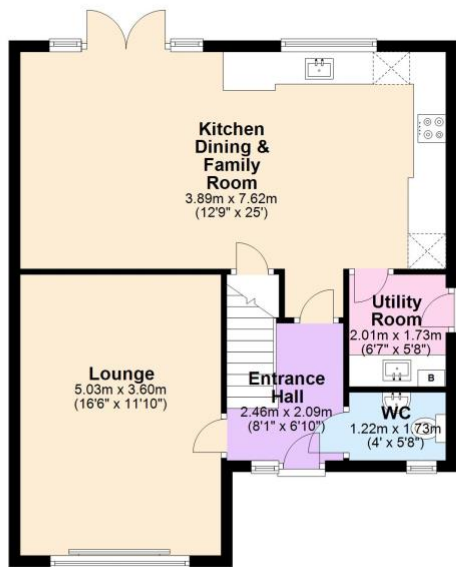
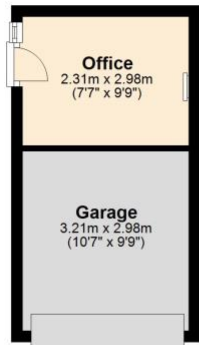
AGENTS NOTE: This is an outstanding family home with immense style and character. Properties of this calibre rarely come to market and for this reason we recommend an early viewing as we envisage a considerable amount of interest.



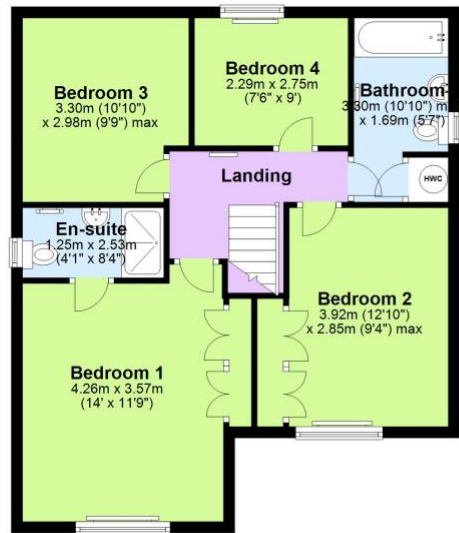


51 Woods Road | Hartford, Cheshire, CW8 1SF

Ground Floor
Approx. 78.6 sq. metres (846.1 sq. feet)



First Floor
Approx. 61.9 sq. metres (666.0 sq. feet)



Total area: approx. 140.5 sq. metres (1512.1 sq. feet)

