

SNELLERS

ESTATE AGENTS



Queens Road, KT2

£2,195 PCM

This extraordinary Art Deco maisonette has three double bedrooms, two bathrooms, a large kitchen/dining room and direct access to a private garden. The property is finished to a very high standard throughout and offers ample built in storage - This property is a must see!.

Located close to the Kingston gate of Richmond Park, perfect for keen cyclists, runners and walkers. Only a short walk to Norbiton station and Kingston town centre. There are also a range of Ofsted outstanding schools and popular restaurants & bars nearby.

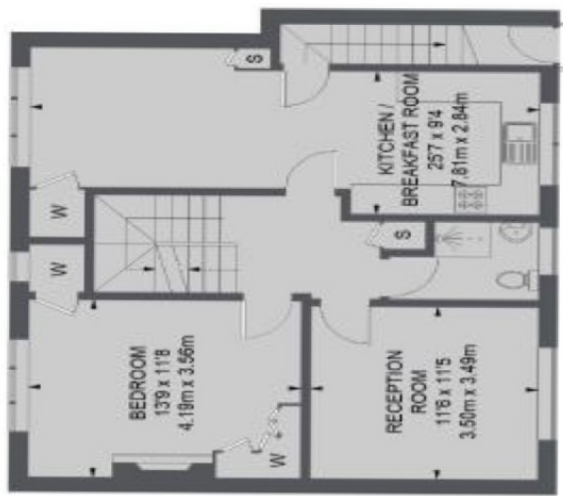
- Three Double Bedroom Maisonette • Two Bathrooms • Moments from Richmond Park •
- Private Rear Garden • Built in Storage • Modern Throughout •

SNELLERS

ESTATE AGENTS



SECOND FLOOR



FIRST FLOOR



GROUND FLOOR

TOTAL APPROX. FLOOR AREA
1298 SQ. FT. (120.57 SQ. M.)

Snellers Kingston Lettings
17-21 Richmond Road
Kingston
KT2 5BW
020 8546 0505
kingstonlettings@snellers.co.uk

Energy Rating: C We aim to make our particulars both accurate and reliable. However they are not guaranteed; nor do they form part of an offer or contract. If you require clarification on any points then please contact us, especially if you're traveling some distance to view. Please note that appliances and heating systems have not been tested and therefore no warranties can be given as to their good working order