



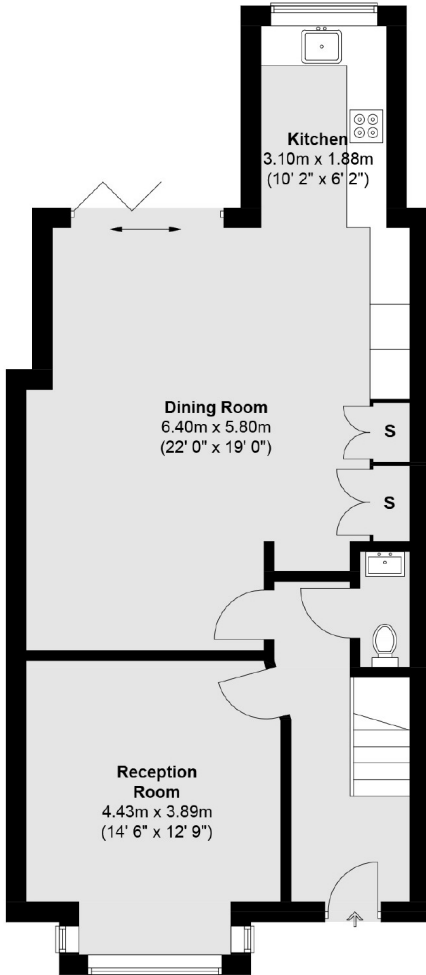
## Ealing Park Gardens, W5

£738 pw (£3,200 pcm)

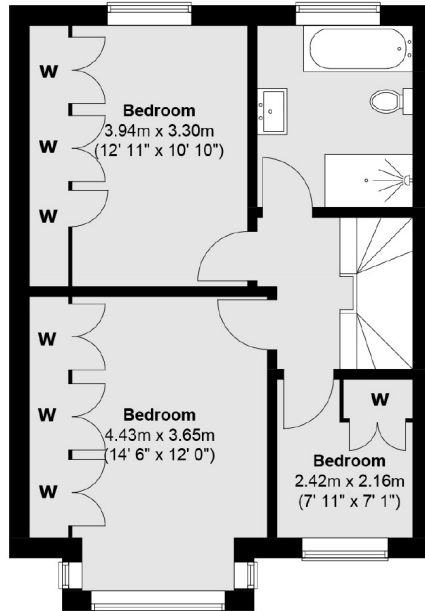
A stunning five bedroom family home. Downstairs is a reception to the front and large open plan kitchen with doors opening to the garden. On the first floor are three bedrooms and a family bathroom and the loft has been converted to create two doubles and a shower room.

Ealing Park Gardens is a tree lined residential street close by to the many transport links, shops, cafe's and parks convenient for

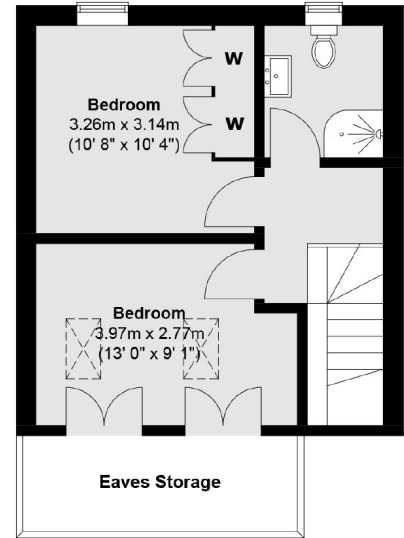
**Ground Floor**



**First Floor**



**Second Floor**



Total area (approx.) : 149.5 sq. m (1609 sq. ft)

Robertson Smith & Kempson Northfields Lettings  
116 Northfield Avenue, London,  
W13 9RT  
020 8280 2800  
northfieldslettings@robertsonsmithandkempson.co.uk

Energy Rating: C. We aim to make our particulars both accurate and reliable. However they are not guaranteed; nor do they form part of an offer or contract. If you require clarification on any points then please contact us, especially if you're traveling some distance to view. Please note that appliances and heating systems have not been tested and therefore no warranties can be given as to their good working order.