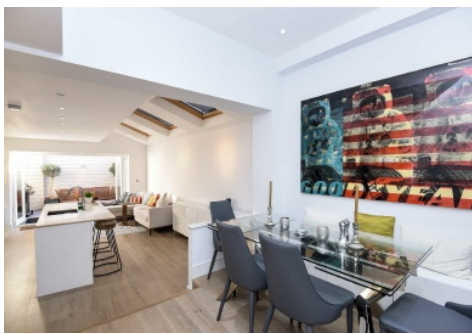


Chard

Lettings



Epirus Road, SW6

£850 pw (£3686 pcm)

Immaculate and contemporary three double bedroom flat to let with a private garden in Fulham Broadway.

Epirus Road is located just off Fulham Road and North End Road where there are many different bus routes leading into Chelsea and the city. The closest underground station is Fulham Broadway and the nearest super store is Waitrose on the corner of Fulham Road and North End Road.

- Three double bedrooms • Immaculate refurbishment • Three bathrooms •
- Private garden • Open plan living room and kitchen • Fulham

Chard

— Lettings —

Chard Fulham
5 Harwood Road,
London, SW6 4QP
020 7384 1400
fulhamlettings@chard.co.uk

Energy Rating: B. We aim to make our particulars both accurate and reliable. However they are not guaranteed; nor do they form part of an offer or contract. If you require clarification on any points then please contact us, especially if you're traveling some distance to view. Please note that appliances and heating systems have not been tested and therefore no warranties can be given as to their good working order.

