

# FLETCHERS

ESTATE AGENTS



## Duke Road, W4

£1,350,000

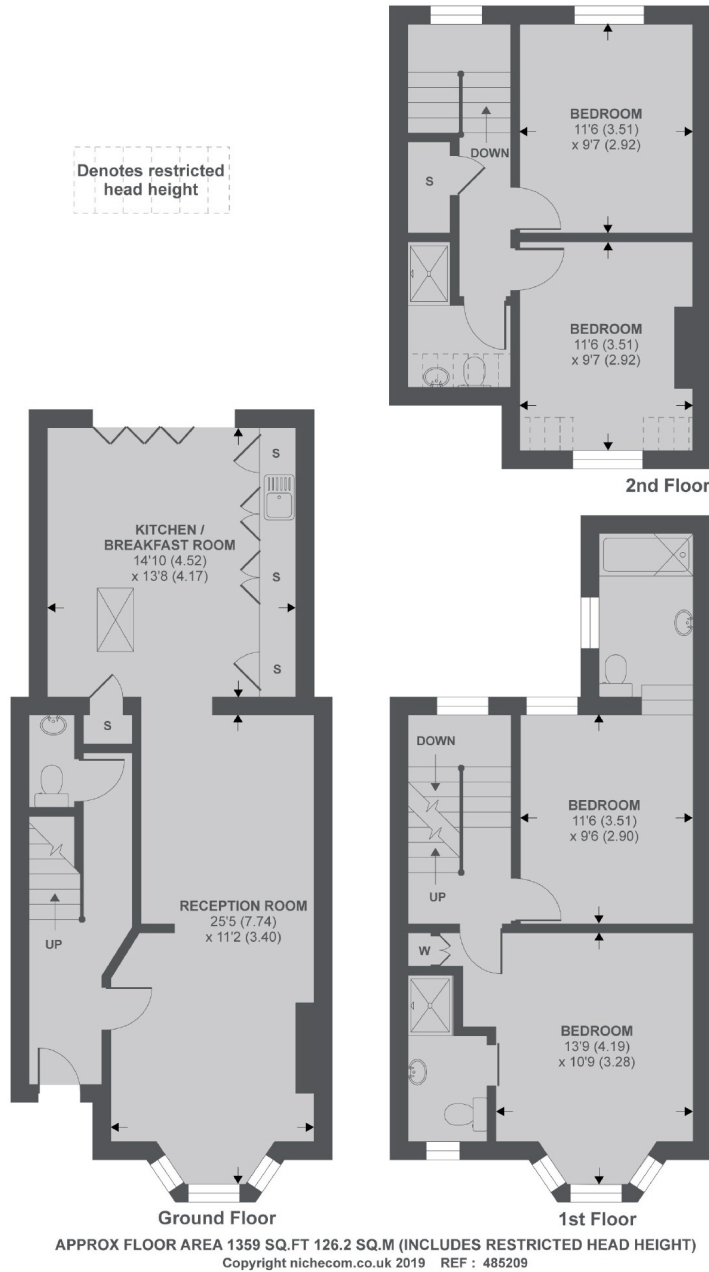
A four double bedroom Victorian home with two reception rooms that lead onto an open plan kitchen-dining room with doors opening onto a private east facing garden. The property also benefits from no onward chain.

Duke Road is a highly sought after road in the Glebe Estate just off Chiswick High Road. There are numerous shops, restaurants, cafés and bars within walking distance and Turnham Green Underground station is 0.4 miles away.

- Four Double Bedrooms • Two Reception Rooms • Excellent Location • Close To Tube • Bay Fronted • No Onward Chain •

# FLETCHERS

ESTATE AGENTS



Fletchers Chiswick Turnham Green  
Sales  
58 Turnham Green Terrace, London, W4  
1QP  
020 8987 3000

Energy Rating: D. We aim to make our particulars both accurate and reliable. However they are not guaranteed; nor do they form part of an offer or contract. If you require clarification on any points then please contact us, especially if you're traveling some distance to view. Please note that appliances and heating systems have not been tested and therefore no warranties can be given as to their good working order.