

FLETCHERS

ESTATE AGENTS



Hamlet Gardens, W6

£1,245,000

UNDER OFFER. In this great spot only 100m from Ravenscourt Park, a four floor mid terrace post-war house (circa 1831 sq foot) with a hidden below ground garage.

There is plenty of entertaining space with a dual aspect double reception room, with a fully fitted kitchen alongside, and south-facing balcony. There are four bedrooms upstairs, with a family bathroom and en-suite shower.

On the garden level there is an end to end double garage accessed via a concealed driveway with electric gates, which also gives access to a charming secluded garden.



In this great spot only 100m from Ravenscourt Park, a four floor mid terrace post-war house (circa 1831 sq foot) with a hidden below ground garage.

There is plenty of entertaining space with a dual aspect double reception room, with a fully fitted kitchen alongside, and south-facing balcony. There are four bedrooms upstairs, with a family bathroom and en-suite shower.

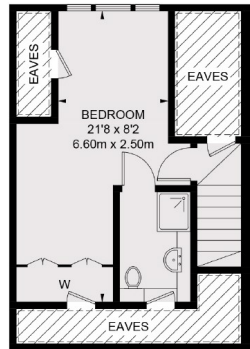
On the garden level there is an end to end double garage accessed via a concealed driveway with electric gates, which also gives access to a charming secluded garden.

Hamlet Gardens is perfectly placed between Hammersmith and Chiswick, with the fabulous selection of restaurants, gastro pubs, independent shops, and within 500m of Ravenscourt Park Station, as well as being 15 minutes walk to river walks on Upper Mall.

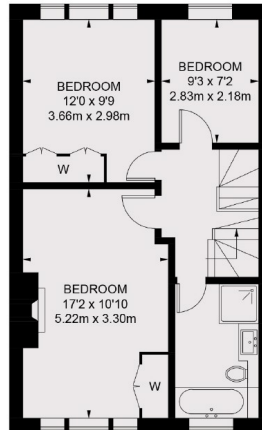
- Four Bedrooms • Bathroom and En-suite Shower • Double Reception Room •
- Fitted Kitchen • Private Garden • Double Garage •



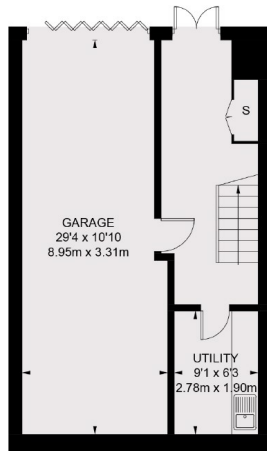
 = REDUCED HEADROOM BELOW 1.5M / 5'0"



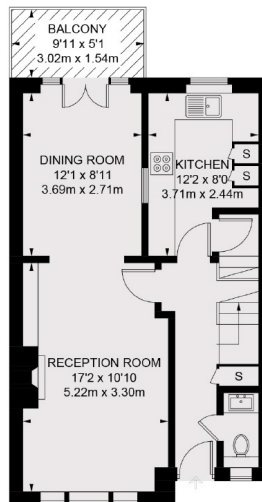
SECOND FLOOR



FIRST FLOOR



LOWER GROUND FLOOR



RAISED GROUND FLOOR

TOTAL APPROX. FLOOR AREA 1831 SQ. FT. (170.1 SQ. M.)
(EXCLUDING EAVES)

Fletchers Chiswick Turnham Green Sales
58 Turnham Green Terrace
London
W4 1QP
020 8987 3000
chiswicksales@fletcherestates.com

Energy Rating: C We aim to make our particulars both accurate and reliable. However they are not guaranteed; nor do they form part of an offer or contract. If you require clarification on any points then please contact us, especially if you're traveling some distance to view. Please note that appliances and heating systems have not been tested and therefore no warranties can be given as to their good working order