

## Hurlingham Business Park,

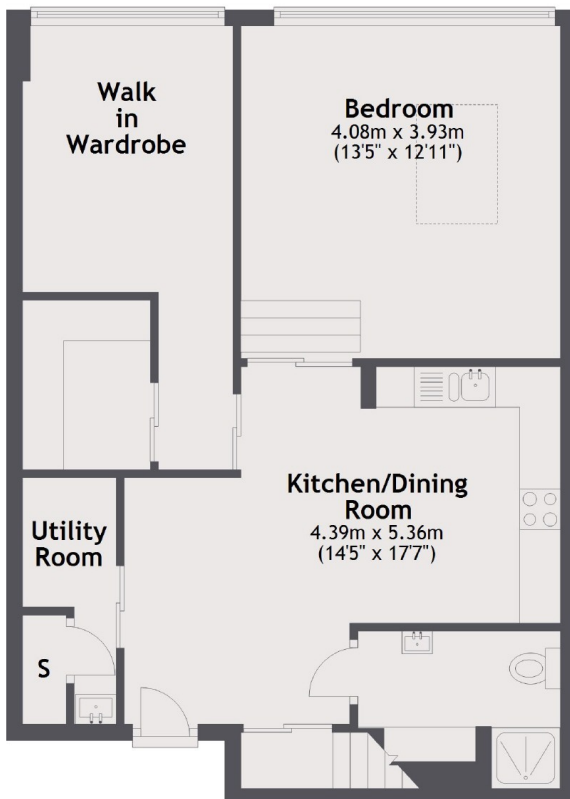
£623 pw (£2,700 pcm)

This two bedroom loft style flat is on the first and second floors of this modern conversion. The property has fantastic natural light and offers great space throughout, a semi open plan reception with high ceilings and an integrated modern kitchen with space for dining.

The property is off Sullivan Road, with good access to local amenities on Wandsworth Bridge Road, Parsons Green and on Fulham Broadway. South Park and Hurlingham Park are close by and you have a variety of bus routes leading into Chelsea and the city.

- Semi Open-Plan • Two Bedrooms • Two Bathrooms •

## Ground Floor



## First Floor

Total area: approx. 94.6 sq. metres (1018.3 sq. feet)

Chard Fulham  
5 Harwood Road,  
London, SW6 4QP  
020 7384 1400  
fulhamlettings@chard.co.uk

Energy Rating: D. We aim to make our particulars both accurate and reliable. However they are not guaranteed; nor do they form part of an offer or contract. If you require clarification on any points then please contact us, especially if you're traveling some distance to view. Please note that appliances and heating systems have not been tested and therefore no warranties can be given as to their good working order.