

# FLETCHERS

ESTATE AGENTS



## Linden Gardens, W4

£449,950

An attractive first floor conversion flat is in great condition throughout, with a spacious reception room complete with high ceilings large windows and fireplace. There is a decent double bedroom to the rear, with built in storage.

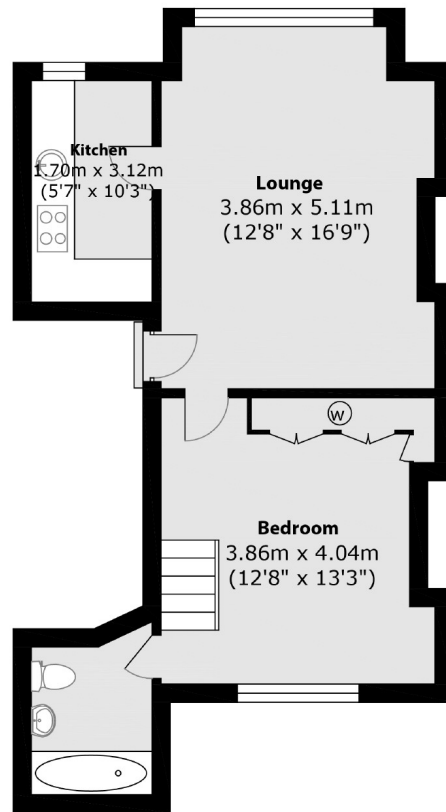
Linden Gardens is a pretty tree lined street in a fantastic position just off Chiswick High Road. Local amenities include an array of shops, restaurants and cafés to chose from, as well as easy access to Turnham Green Station, and the M4/A4.

- One Bedroom • First Floor Flat • Period Features • Attractive Building • Share of Freehold • Superb Location •

# FLETCHERS

ESTATE AGENTS

---



Main area: Approx. 43.4 sq. meters (467.2 sq. feet )

Fletchers Chiswick Turnham Green Sales  
58 Turnham Green Terrace, London, W4 1QP  
020 8987 3000  
[chiswicksales@fletcherestates.com](mailto:chiswicksales@fletcherestates.com)

Energy Rating: . We aim to make our particulars both accurate and reliable. However they are not guaranteed; nor do they form part of an offer or contract. If you require clarification on any points then please contact us, especially if you're traveling some distance to view. Please note that appliances and heating systems have not been tested and therefore no warranties can be given as to their good working order.