

ROKSTONE



Chesham Place, Belgravia, SW1X

A contemporary 5 bedroom apartment on the fourth floor of the Candy and Candy building with Foster + Partners on the site of the previous Belgravia Telephone exchange. The building offers contemporary living in one of London's most prestigious conservation areas. The exterior provides a modern counterpart to its elegant Victorian surroundings. Stone forms the discrete façade of the building, giving expression to the recessed glazed cladding. This outer stone façade provides vertical emphasis in keeping with the neighbouring town-houses and provides shading to the glazed horizontal layer behind. Framed screens of vertical rods provide a contemporary solution to privacy and further shade the apartments, while echoing the timber shutters on windows of the adjacent buildings. The central bay at the rear of the building is dramatically pulled out in a sloping element of inclined glass panels, allowing light to flood the apartments and decreasing the visibility of the development to the rear.

The fourth floor apartment offers lateral living over one floor. With direct lift access and dual aspect views, the apartment comprises a large double reception room overlooking Chesham Place, separate study, eat in kitchen with adjoining TV room. The principal suite benefits from his and hers bathrooms, walk in dressing area and large bedroom with balcony access. There are four further bedrooms, two which are en-suite and a large family bathroom.

Price £12,950 pw



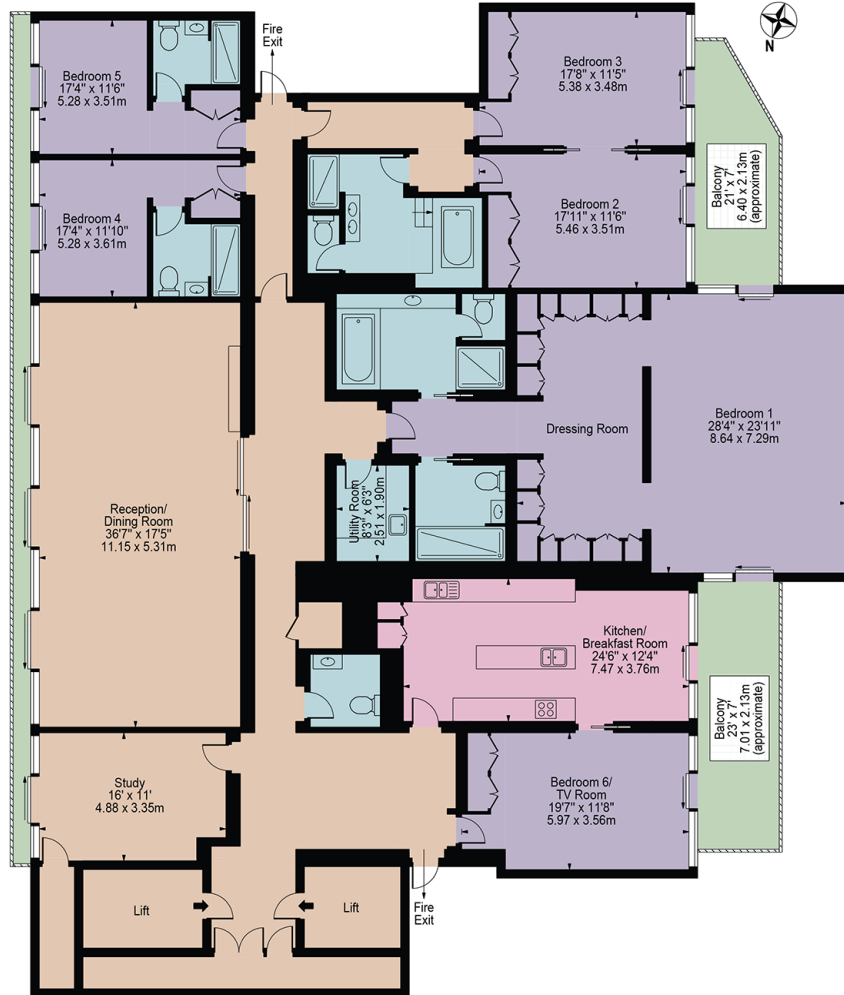
Olivia McSweeney | Head of Lettings
D: 020 3219 5679 | M: 07584633058 | E: olivia@rokstone.com
5 Dorset Street, London, W1U 6QJ

ROKSTONE

Chesham Place

Approx. Gross Internal Area 4425 Sq Ft - 411.10 Sq M
(Excluding Lift)

Approx. External Area Of Balconies 404 Sq Ft - 37.53 Sq M



Fourth Floor

For Illustration Purposes Only - Not To Scale

This floor plan should be used as a general outline for guidance only and does not constitute in whole or in part an offer or contract. Any intending purchaser or lessee should satisfy themselves by inspection, searches, enquiries and full survey as to the correctness of each statement. Any areas, measurements or distances quoted are approximate and should not be used to value a property or be the basis of any sale or let.

Olivia McSweeney | Head of Lettings

D: 020 3219 5679 | M: 07584633058 | E: olivia@rokstone.com

5 Dorset Street, London, W1U 6QJ