



## Green Walk | Southall | UB2 5QX

£694,950

\*WE HAVE AN OPEN DAY TAKING PLACE ON SATURDAY 3RD OCTOBER AT 12:00PM. TO ARRANGE A VIEWING SLOT PLEASE CONTACT US\*

Rarely available on this prime residential road in Norwood Green comes this wonderful example of a traditional well built 1930's semi detached family home boasting spacious living throughout, plenty of scope to extend and modernise. The property briefly consists of two reception rooms, a separate kitchen, a utility room, downstairs wc and a garage. Upstairs there are three bedrooms and a three piece bathroom suite. Further benefits include high ceilings, bay fronted windows, an own driveway and a rear garden in excess of 100ft. Walking distance to reputable schools, bus stops and a short Journey to Southall Railway Station (soon to be part of the Crossrail network). A blank canvas for buyers, viewings are highly recommended.

## Tenure

Freehold

## Council Tax Band

E

## Viewing Arrangements

Strictly by appointment

## Contact Details

10 Central Parade

New Heston Road

Heston

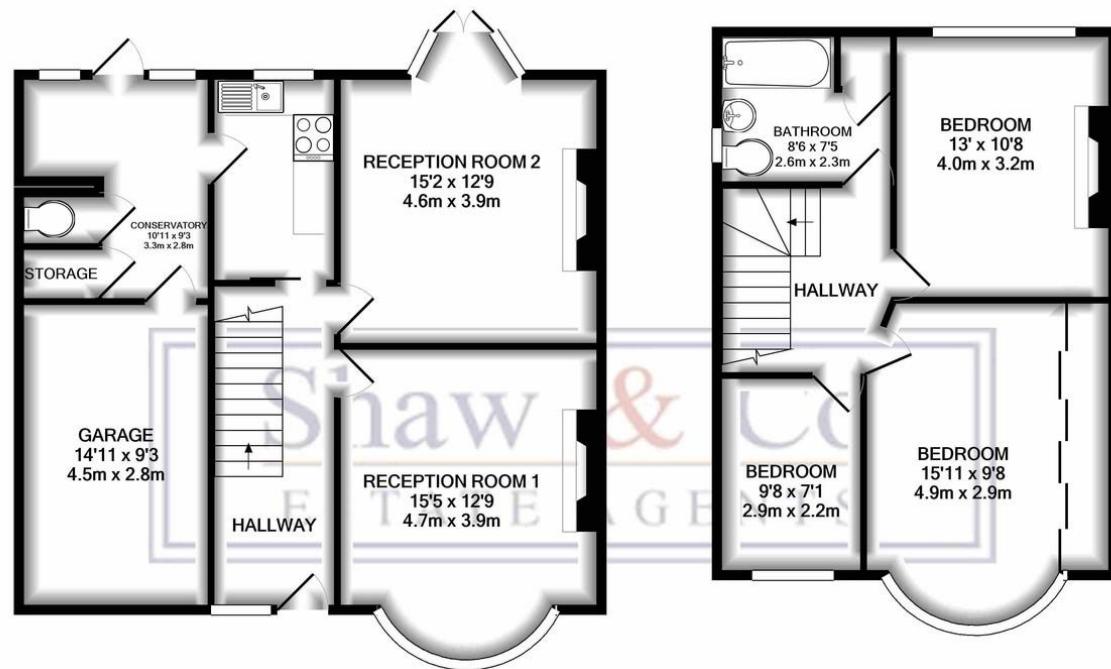
Middlesex

TW5 0LH

020 8570 7258

heston@shawandcoestates.com

www.shawandcoestates.com



GROUND FLOOR  
APPROX. FLOOR  
AREA 751 SQ.FT.  
(69.7 SQ.M.)

1ST FLOOR  
APPROX. FLOOR  
AREA 519 SQ.FT.  
(48.2 SQ.M.)

TOTAL APPROX. FLOOR AREA 1270 SQ.FT. (118.0 SQ.M.)

Whilst every attempt has been made to ensure the accuracy of the floor plan contained here, measurements of doors, windows, rooms and any other items are approximate and no responsibility is taken for any error, omission, or mis-statement. This plan is for illustrative purposes only and should be used as such by any

%epcGraph\_c\_1\_349%

Agents Note: Whilst every care has been taken to prepare these particulars, they are for guidance purposes only. All measurements are approximate and for general guidance purposes only and whilst every care has been taken to ensure their accuracy, they should not be relied upon and potential buyers/tenants are advised to recheck the measurements

