



## THE COACH HOUSE, HAVEN FARM, LAMB LANE, FIRBECK, WORKSOP, S81 8DQ

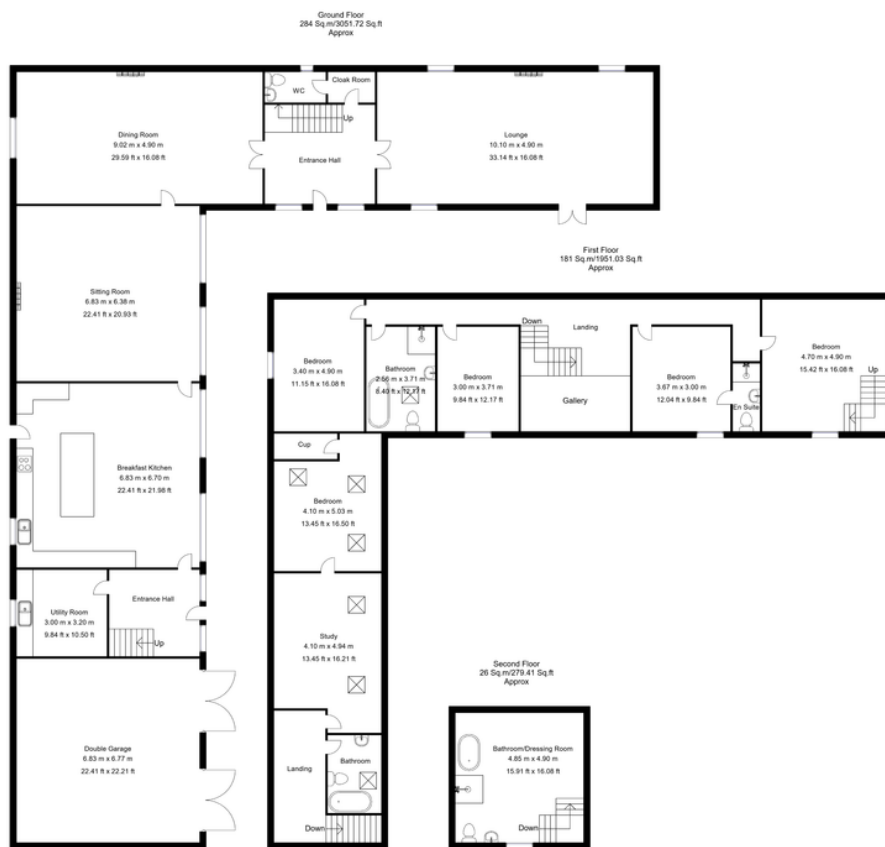
- superb character barn conversion
- around 5,000 sq ft of living space
- set in grounds of approx 3 acres
- Double Garage and further parking
- 5 bedrooms / 3 bathrooms
- potential for independent annex
- good communication links
- secluded lawned grounds
- surrounded by open countryside
- good equestrian opportunities

**ASKING PRICE OF: £850,000**



Standing within grounds of around 3 acres, which include formal gardens and paddock, a magnificent barn conversion with origins dating back to the 16th Century. The generously proportioned accommodation, which amounts to around 5,000 sq ft, is full of character and comprises of; 3 reception rooms, living / dining kitchen, utility room, cloaks / WC. Master bedroom suite with upper floor providing bathroom and dressing room. 4 further bedrooms, house bathroom. One bedroom is independently accessed and has potential to provide independent living. Outside; delightful, private lawned grounds. Double garage, further parking. Rear paddock of around 2 acres. A truly unique home, located in an idyllic rural setting, with excellent communication links.





Whilst every attempt has been made to ensure the accuracy of the floor plan contained here, no responsibility is taken for incorrect measurements of doors, windows, appliances and room or any error, omission or misstatement. Exterior and interior walls are drawn to scale based on interior measurements. Any figure given is for initial guidance only and should not be relied on as a basis of valuation. These plans are for marketing purposes only and should be used as such by any prospective purchase. Specifically no guarantee is given on the total square footage of the property if quoted on this plan.

CC Ltd ©2018

