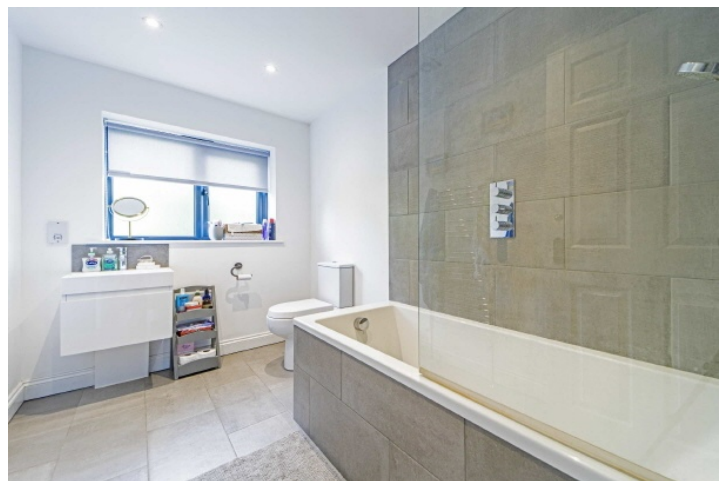


# SNELLERS

ESTATE AGENTS

---



**Cleves Way, TW12**

**£835,000**

A lovely four bedroom semi detached house tastefully extended and updated throughout. Offered in perfect condition and ready to move into this house is ideal for families looking to take advantage of the local schools.



The ground floor accommodation has ample living space due to the double story and rear extensions. This gives you a spacious double reception room with beautiful wood flooring, separate utility room and down stairs cloakroom. To the rear of the house you have a vast and bright kitchen diner / family room with modern appliances and bi fold doors leading out to the large west facing garden.

The first floor has three double bedrooms, a single bedroom and a modern family bathroom. The guest room is complete with an ensuite shower. The house also has potential to extend further STPP

Externally to the front of the house there is off street parking for multiple cars and side access to the large rear garden.

Cleves Way is a quiet cul-de-sac in Hampton Village with Hampton Station, local amenities and Waitrose all within 700 yards of your front door. There are also the immensely popular and highly rated infants and junior schools within the same distance.

- Kitchen Diner /Family Room • Four Bedrooms • Two Bathrooms •
- Large Garden • Off Street Parking • Close To Station •

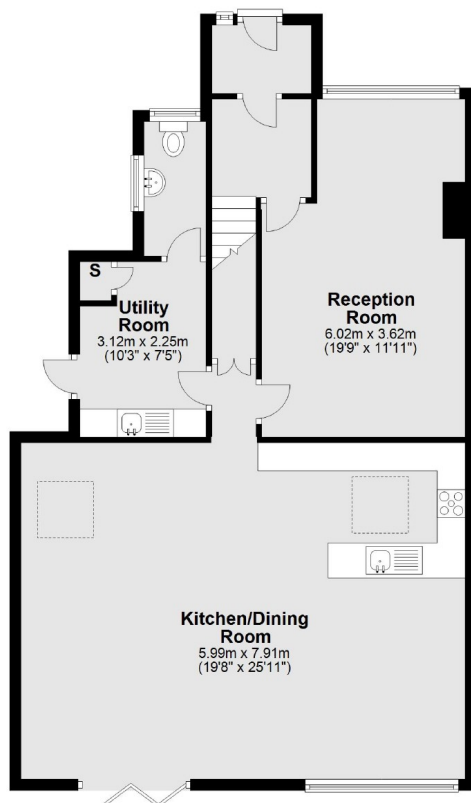




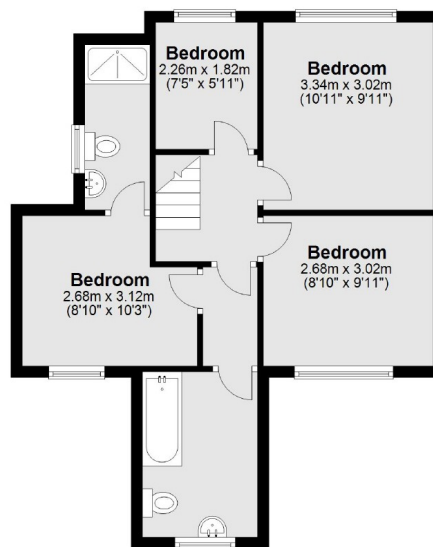
# SNELLERS

ESTATE AGENTS

Ground Floor



First Floor



Total area: approx. 135.0 sq. metres (1452.6 sq. feet)

Snellers Hampton Hill Sales  
197-201 High Street  
Hampton Hill  
TW12 1NL  
020 8783 0083  
[hamptonsales@snellers.co.uk](mailto:hamptonsales@snellers.co.uk)

Energy Rating: D We aim to make our particulars both accurate and reliable. However they are not guaranteed; nor do they form part of an offer or contract. If you require clarification on any points then please contact us, especially if you're traveling some distance to view. Please note that appliances and heating systems have not been tested and therefore no warranties can be given as to their good working order