



Bermondsey Wall West, SE16

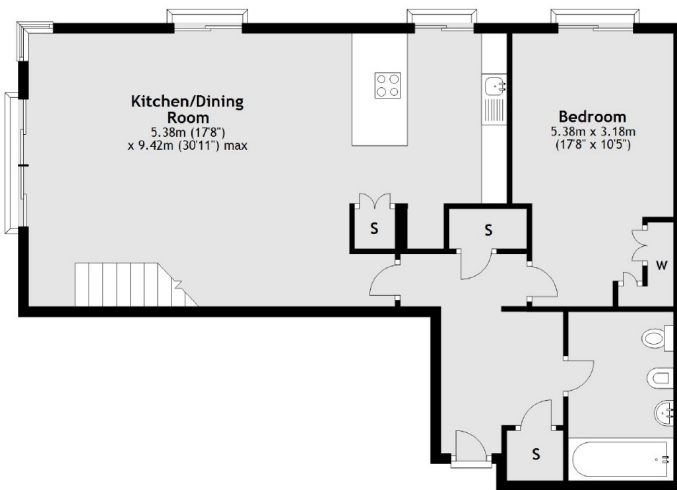
£1,500,000

OIEO £1,500,000. Offering panoramic views of the London Skyline, this two double bedroom split level penthouse apartment is in

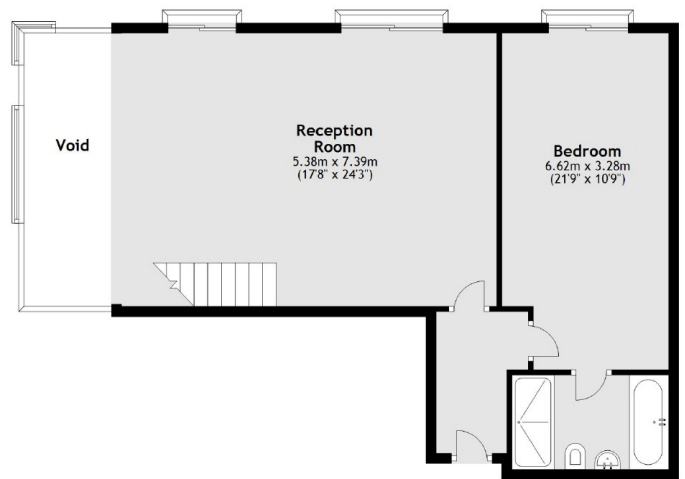
Luna House is located only 0.4 miles from Bermondsey tube station and is moments from the restaurants and delis of Shad Thames as

- Incredible Views of London • Split Level Penthouse • Parking • Two Double Bedrooms • Fantastic

Sixth Floor



Seventh Floor



Total area: approx. 155.4 sq. metres (1673.0 sq. feet)

City Docklands
205 Tooley Street
London, SE1 2JX
020 7234 0880
welcome@citydocklands.com

Energy Rating: D. We aim to make our particulars both accurate and reliable. However they are not guaranteed; nor do they form part of an offer or contract. If you require clarification on any points then please contact us, especially if you're traveling some distance to view. Please note that appliances and heating systems have not been tested and therefore no warranties can be given as to their good working order.