



1 Field Close, Northwich, Cheshire, CW8 4UG

£495 pcm



A one bedroom semi-detached house, occupying a small cul-de-sac position on the popular Firdale Park area of Northwich. The property benefits from gas central heating and comprises: Entrance porch with built-in cupboard, open plan living room with lounge and dining areas and fitted kitchen on the ground floor along with a first floor mezzanine bedroom and bathroom. Outside there is an enclosed rear garden and there is an private parking space. Unfurnished and immediately available, restrictions apply. An internal viewing is highly recommended.

GROUND FLOOR

HALL

Panelled entrance door, BUILT-IN Storage cupboard, open plan to:

LOUNGE AREA

3.30m x 2.97m (10' 10" x 9' 9")
Oriel window to front, double radiator, staircase to first floor with storage cupboard beneath, open plan to:

DINING AREA

2.06m x 1.98m (6' 9" x 6' 6")
Window and door to garden, radiator, door to:

KITCHEN

2.06m x 2.06m (6' 9" x 6' 9")
fitted with a matching range of wall and base cupboards with worktop space and tiled splashbacks, stainless steel sink, space for fridge and freezer, plumbing for washing machine, window to rear.

FIRST FLOOR

BEDROOM

3.35m x 2.97m (11' x 9' 9")
window to rear, radiator, built-in double wardrobe with hanging rails and shelving, door to:

BATHROOM

Fitted with a three piece suite comprising panelled bath with shower attachment over, pedestal wash hand basin and low-level WC, part tiled walls, window to rear, double radiator.

OUTSIDE

OUTSIDE

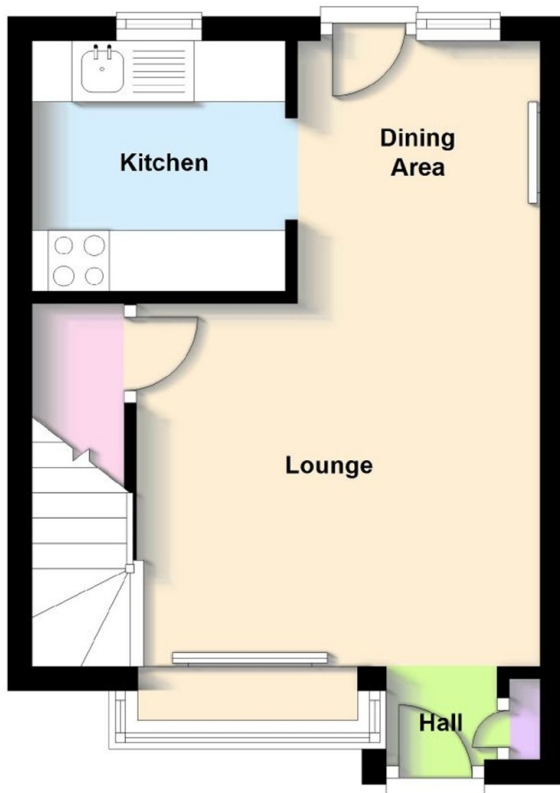
Enclosed rear garden laid to paving flags. Side gate access.
One parking space to front.



These particulars, whilst believed to be accurate are set out as a general outline only for guidance and do not constitute any part of an offer or contract. Intending purchasers should not rely on them as statements of representation of fact, but must satisfy themselves by inspection or otherwise as to their accuracy. All measurements quoted are approximate. We are unable to confirm the working order of any fixtures and fittings including appliances that are included in these particulars. No person in this firm's employment has the authority to make or give any representation or warranty in respect of the property.

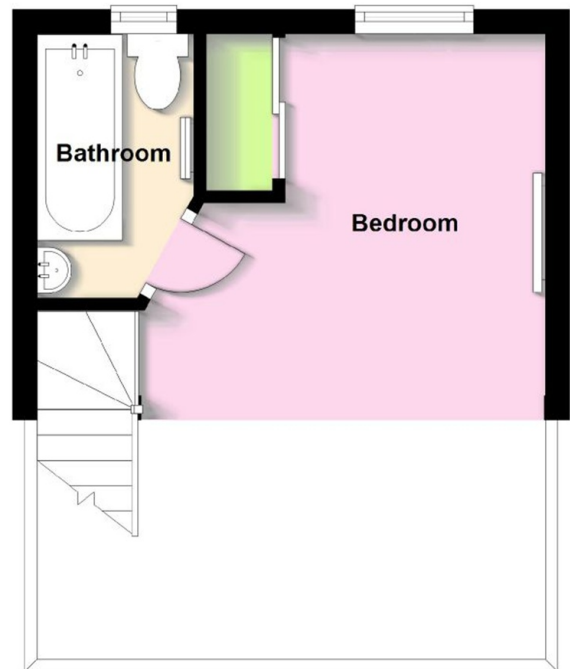
Ground Floor

Approx. 23.0 sq. metres (247.7 sq. feet)



First Floor

Approx. 12.3 sq. metres (132.4 sq. feet)



Total area: approx. 35.3 sq. metres (380.0 sq. feet)

This plan is included as a service to our customers and is intended as a GUIDE TO LAYOUT only. Dimensions are approximate.
DO NOT SCALE.



33, The Green, Hartford, Northwich, CW8 1QA

01606 331784

Email: enquiries@westates.co.uk

www.westates.co.uk

