



Latchmere Road, SW11

£1,095,000

Fully refurbished and modernised four bedroom, two bathroom Victorian mid terraced house offered with no onward chain.

- Victorian Terraced House
- Recently Refurbished
- Ground Floor-Open Plan Layout
- Four Bedrooms
- Downstairs W/C
- 0.6 Miles To Clapham Junction Station



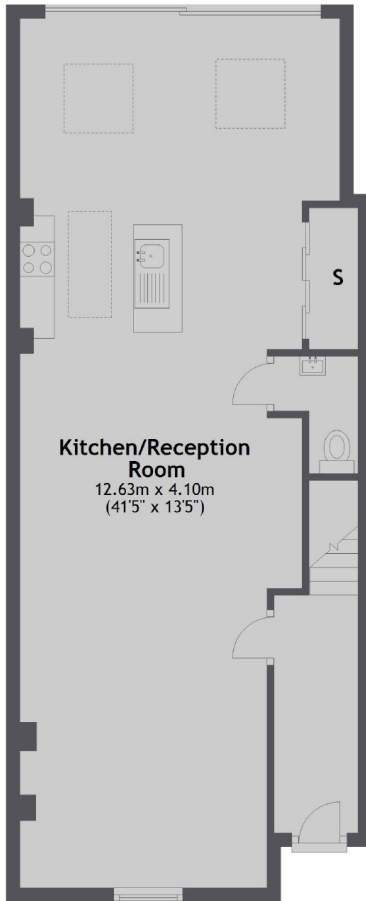
The ground floor has been reconfigured to create an open plan living/ entertaining space and allows an abundance of light to flow through as well as being aided with skylights. The kitchen is based to the rear and is fully integrated with modern appliances and fixtures and boasts an island providing worktop space and sink. There is ample room for dining table and chairs and the rear garden is accessed via sliding doors. The ground floor also has a W/C. The first floor has two two double bedrooms and a modern fitted family bathroom. The second floor has a further two bedrooms; one being the master and boasts an ensuite which is complete with his and her sinks, W/C, bathtub and freestanding shower.

Located on Latchmere Road this property is moments from Falcon Park and in-turn Shillington Park, whilst Battersea Park is a little further. Clapham Junction station and the amenities Clapham Junction has to offer is 0.6 miles away.





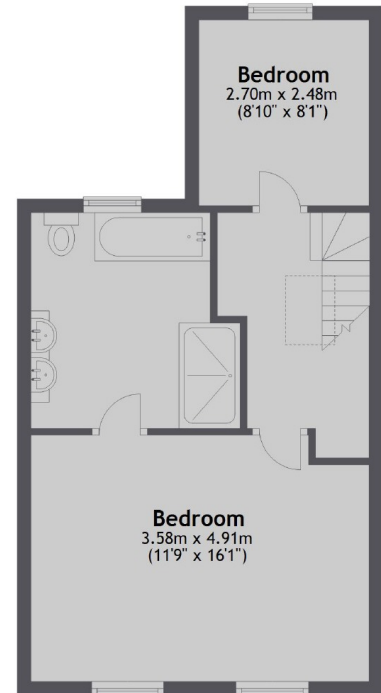
Ground Floor



First Floor



Second Floor



Total area: approx. 142.8 sq. metres (1536.9 sq. feet)

Jacksons Clapham
73 Abbeville Road
London
SW4 9JN
020 8875 7995
clapham.sales@jacksonsestateagents.com

Energy Rating: C We aim to make our particulars both accurate and reliable. However they are not guaranteed; nor do they form part of an offer or contract. If you require clarification on any points then please contact us, especially if you're traveling some distance to view. Please note that appliances and heating systems have not been tested and therefore no warranties can be given as to their good working order.