



## Criffel Avenue, SW2

**£3,000 PCM**

Presented to a high standard throughout, this four bedroom split level maisonette with a private garden would be perfect for a professional couple.

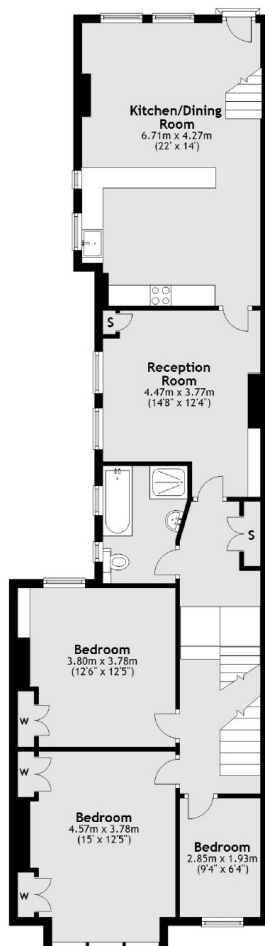
- Split Level Maisonette
- Large Reception Room
- Modern Fitted Kitchen
- Four Bedrooms
- Part Furnished
- Suitable For A Family

For further information on the costs associated with renting a property, please pop into our office or visit our website.

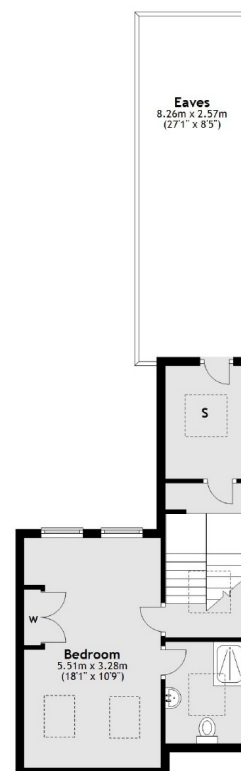
Ground Floor



First Floor



Second Floor



Total area: approx. 142.5 sq. metres (1533.6 sq. feet)

Jacksons Balham  
8-11 Balham Station Road  
London  
SW12 9SG  
020 8675 6565  
[balham.lettings@jacksonsestateagents.com](mailto:balham.lettings@jacksonsestateagents.com)

Energy Rating: E We aim to make our particulars both accurate and reliable. However they are not guaranteed; nor do they form part of an offer or contract. If you require clarification on any points then please contact us, especially if you're traveling some distance to view. Please note that appliances and heating systems have not been tested and therefore no warranties can be given as to their good working order.