



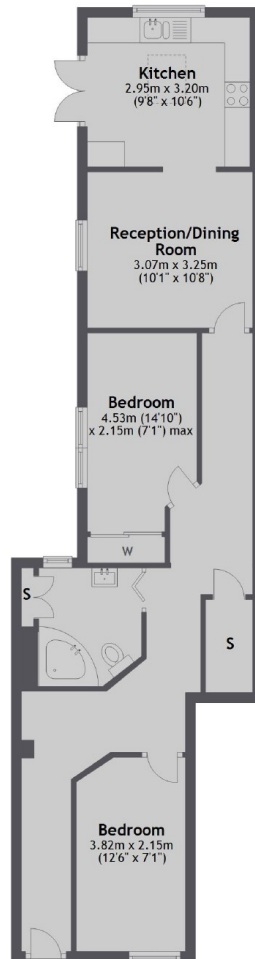
## Station Road, W7

£375,000

\*\*\* Offers In Excess Of \*\*\* A well located two double bedroom ground floor maisonette garden flat which has recently been refurbished to a high standard.

Ideally located with many bus routes and Hanwell Station (Crossrail) within 0.2 miles. Recreational space to enjoy with the 'Bunny Park' also on your doorstep.

## Ground Floor



Total area: approx. 62.7 sq. metres (675.3 sq. feet)

Robertson Smith & Kempson Hanwell Sales  
69 Greenford Avenue,  
London, W7 1LL  
020 8566 2339  
[hanwellsales@robertsonsmithandkempson.co.uk](mailto:hanwellsales@robertsonsmithandkempson.co.uk)

Energy Rating: C. We aim to make our particulars both accurate and reliable. However they are not guaranteed; nor do they form part of an offer or contract. If you require clarification on any points then please contact us, especially if you're traveling some distance to view. Please note that appliances and heating systems have not been tested and therefore no warranties can be given as to their good working order.