



## Amyand Park Road, TW1

£650,000

A well presented, three bedroom first floor Victorian conversion apartment enviably positioned in St. Margarets and moments away from Twickenham.





With charm and character throughout the accommodation offers a large bay fronted reception room with an open plan contemporary kitchen, bedroom/study, good-sized four-piece family bathroom and two double bedrooms.

The property also benefits from having a share of the freehold.

Amyand Park Road is located in St. Margarets Village and within easy reach of Marble Hill Park, close to Orleans Primary School and has fantastic transport links into London Waterloo.

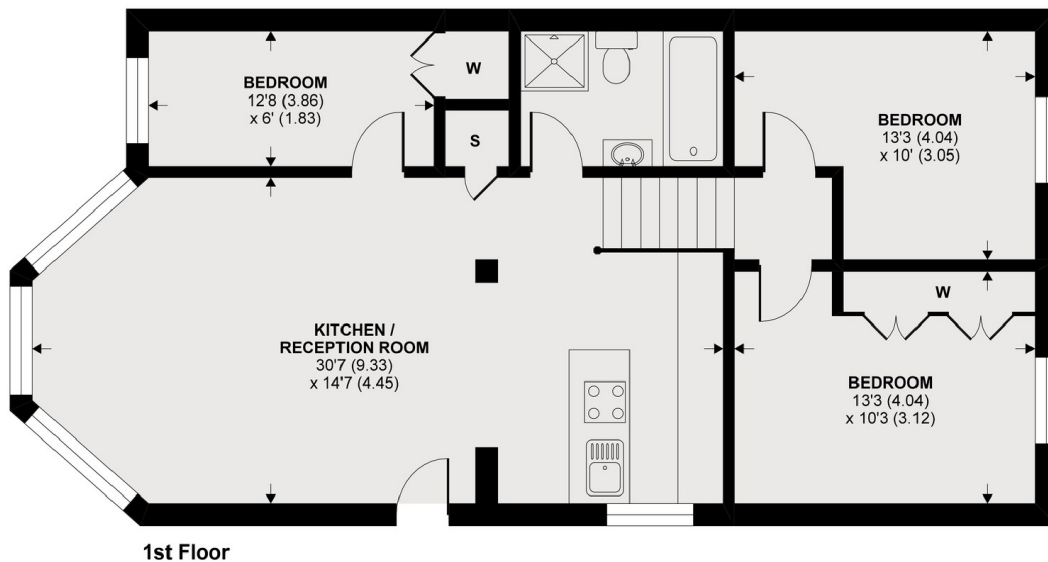
- First Floor • Victorian Conversion • Share of Freehold •
- Three Bedrooms • Good Condition • Excellent Location •





# SNELLERS

ESTATE AGENTS



APPROX FLOOR AREA 877 SQ.FT 81.5 SQ.M

Copyright nichecom.co.uk 2020 REF : 570600

Snellers St. Margarets Sales  
36 Crown Road  
St Margarets  
TW1 3EH  
020 8892 8008  
[stmargaretssales@snellers.co.uk](mailto:stmargaretssales@snellers.co.uk)

Energy Rating: D We aim to make our particulars both accurate and reliable. However they are not guaranteed; nor do they form part of an offer or contract. If you require clarification on any points then please contact us, especially if you're traveling some distance to view. Please note that appliances and heating systems have not been tested and therefore no warranties can be given as to their good working order