



Burmester Road, SW17

£875,000

A mid terrace Edwardian house which has been renovated to a good standard.

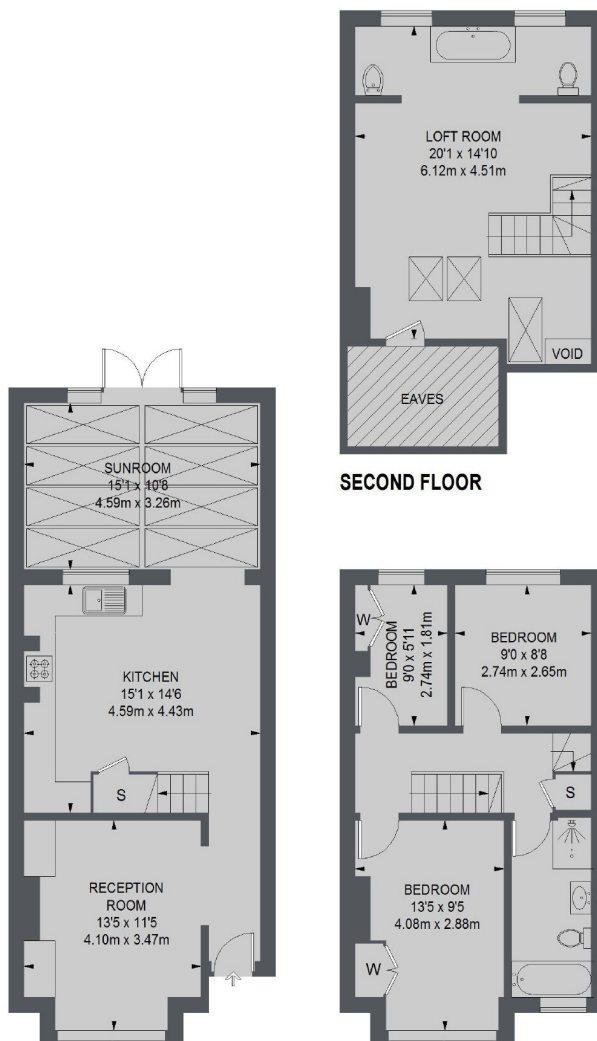
- Four Bedrooms
- Two Bathrooms
- Edwardian Family Home
- Low Maintenance Garden
- Good Condition
- Sought After Location



The property has been thoughtfully extended into the loft and rear, maximising an abundance of natural light to flood all rooms, creating a wonderful family home whilst retaining a wealth of original period features. Accommodation comprises: entrance hall, elegant reception room, spacious modern kitchen open plan to a generous dining and second reception room; which offers a great entertaining space, three bedrooms; the master bedroom benefiting from an en suite bathroom, family bathroom with walk in shower and a low maintenance garden. The property benefits from high ceilings and from being tastefully decorated throughout.

The property is situated in a sought after residential road offering easy access to Earlsfield mainline railway station and Garratt Lane's array of amenities, restaurants and bars. The green open spaces of Wandsworth Common are also close by.





TOTAL APPROX. FLOOR AREA (EXCLUDING VOID & EAVES)
1303 SQ. FT. (121.08 SQ. M.)

Jacksons Earlsfield
372-374 Garratt Lane
Earlsfield
London
SW18 4ES
020 8971 7979

Energy Rating: D We aim to make our particulars both accurate and reliable. However they are not guaranteed; nor do they form part of an offer or contract. If you require clarification on any points then please contact us, especially if you're traveling some distance to view. Please note that appliances and heating systems have not been tested and therefore no warranties can be given as to their good working order.