

**Willcott Road, W3**

**£1,250,000**

A four bedroom semi-detached Victorian home in the heart of Acton and just a short walk from Ealing Common. The property is in excellent condition throughout, offering almost 2000 sq ft of accommodation.





This impressive family home has a bay fronted reception room, a downstairs WC and a utility room. The rear has been extended to create a large eat-in kitchen with bi-folding doors opening on the west-facing garden.

To the first floor are three double bedrooms and a modern family bathroom and the loft has been converted to create the master bedroom with an en suite shower room.

Ideal for the shops and amenities of both Ealing Common and Acton.

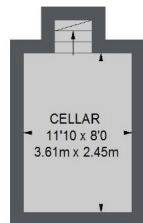
Willcott Road is within half a mile of both Ealing Common and Acton Town stations providing excellent access into town.

- Four Bedrooms • Two Bathrooms • Excellent Condition •
  - Semi-Detached • West-Facing Garden • Central Location •
-

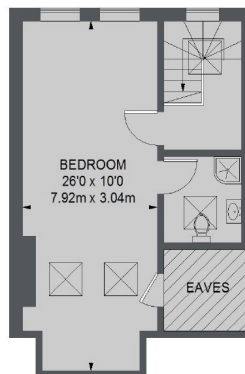




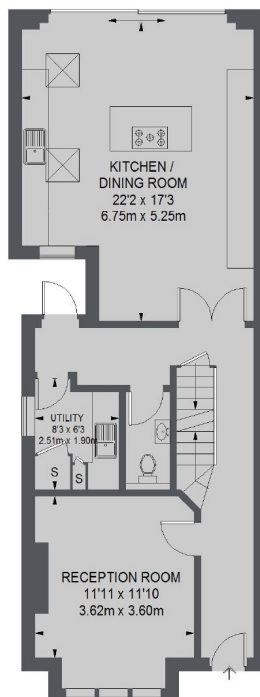




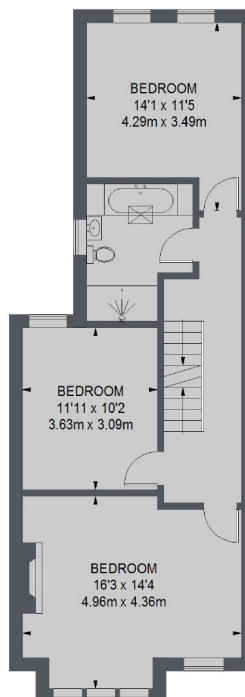
**BASEMENT**



**SECOND FLOOR**



**GROUND FLOOR**



**FIRST FLOOR**

TOTAL APPROX. FLOOR AREA  
(EXCLUDING EAVES)  
1912 SQ. FT. (177.62 SQ. M.)

Robertson Smith & Kempson Acton Sales  
98 High Street, London, W3  
6QX  
020 8896 3996  
actonsales@robertsonsmithandkempson.co.uk

Energy Rating: D. We aim to make our particulars both accurate and reliable. However they are not guaranteed; nor do they form part of an offer or contract. If you require clarification on any points then please contact us, especially if you're traveling some distance to view. Please note that appliances and heating systems have not been tested and therefore no warranties can be given as to their good working order.