

Chard

Lettings



Hans Place, SW1X

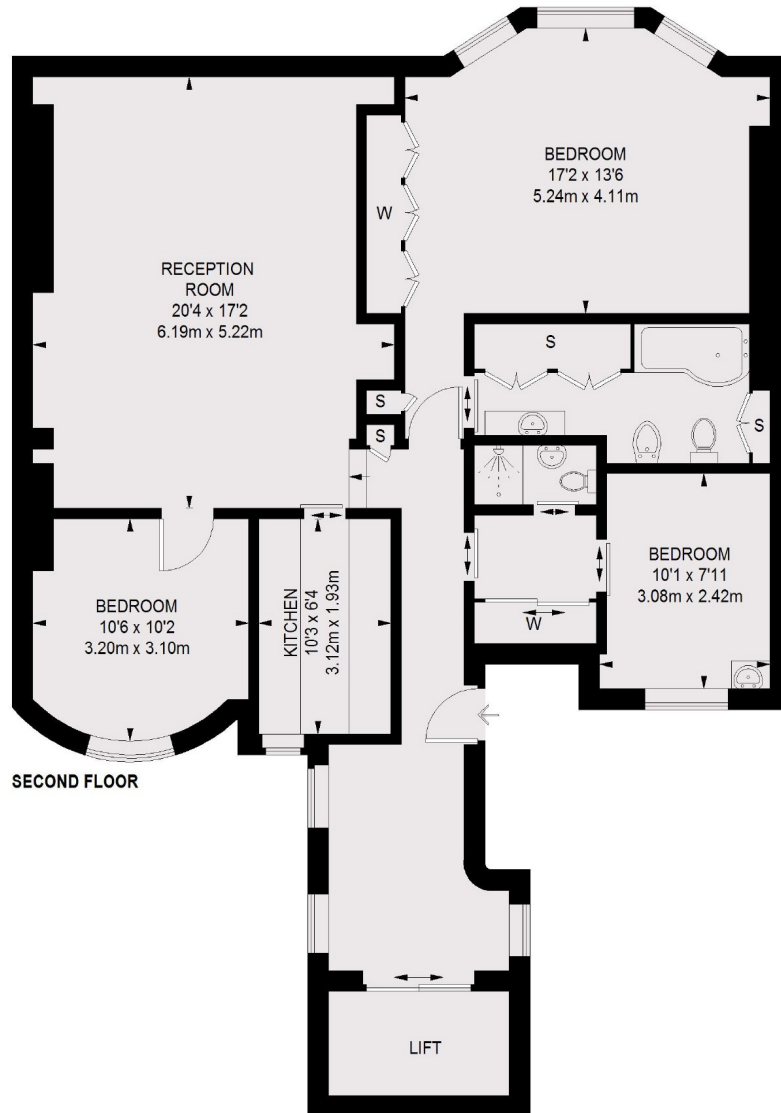
£1,300 pw (£5,633 pcm)

This three bedroom, two bathroom third floor flat overlooking this sought-after garden square in Knightsbridge is moments away from Harrods and offers direct lift access to the flat. The property has a double reception room with great entertainment space and dining area.

With Harrods and Harvey Nichols on your doorstep, Hans Place is ideally situated for the exclusive amenities, restaurants and bars of Knightsbridge and Sloane Square. Knightsbridge station is also a walk away.

Chard

Lettings



TOTAL APPROX. FLOOR AREA (EXCLUDING LIFT)
1135 SQ. FT. (105.43 SQ. M.)

Chard Fulham
5 Harwood Road,
London, SW6 4QP
020 7384 1400
fulhamlettings@chard.co.uk

Energy Rating: C. We aim to make our particulars both accurate and reliable. However they are not guaranteed; nor do they form part of an offer or contract. If you require clarification on any points then please contact us, especially if you're traveling some distance to view. Please note that appliances and heating systems have not been tested and therefore no warranties can be given as to their good working order.