

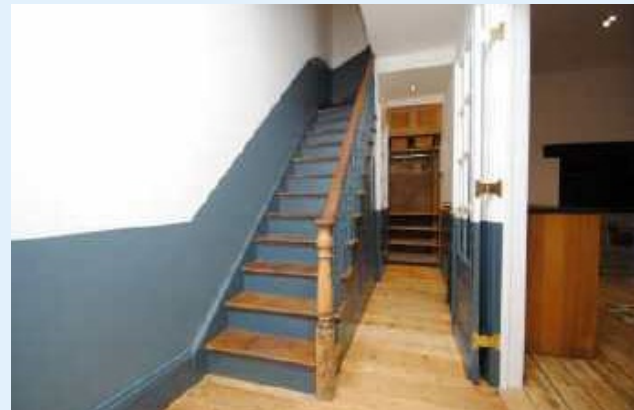


67 Ashley Hill, BS7 9BE

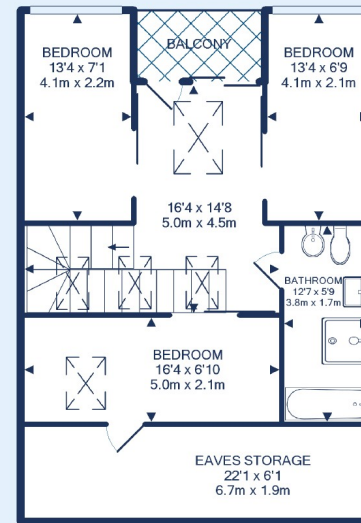
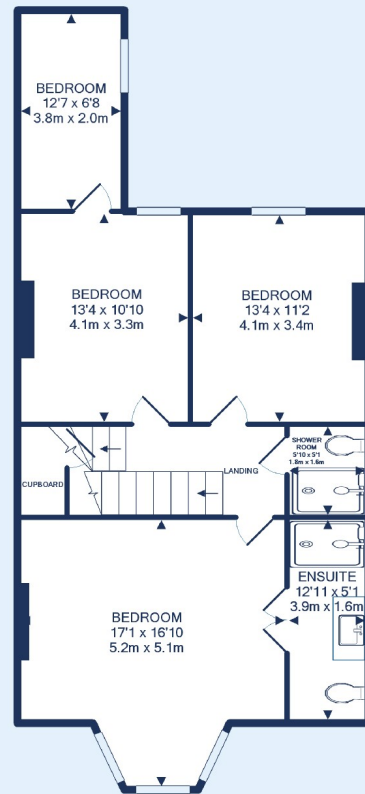
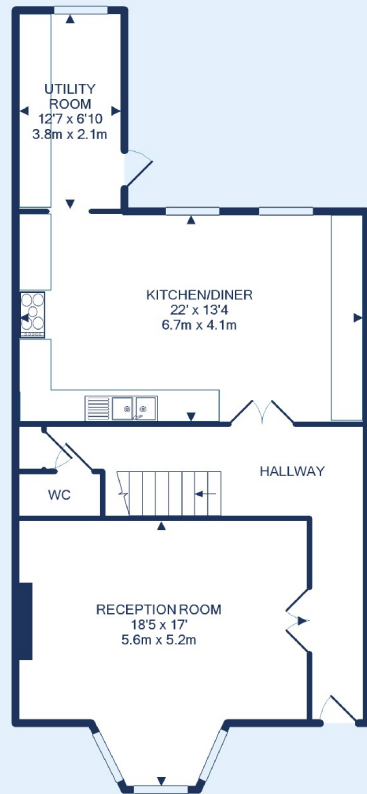
St Andrews

We're so proud of our little house. We bought our home over 3 years ago because of its proximity to all that Bristol has to offer! Excellent schools and parks, Ashley Vale and the city farm, great access to downtown and the view what a view! We thought it would be a perfect house for our growing family.

- No Chain •Montpelier •Ashley Hill •Victorian home •comprehensively refurbished •retained period features •flexible loft conversion •2 very large receptions spaces •tenure - freehold •EPC - C •204 sq.m (taken from EPC) •



Accommodation





St Andrews - Guide price £785,000

7 Bed House

References to the Tenure of a Property are based on information supplied by the Seller. The Agent has not had sight of the title documents. Lease details, service ground rent (where applicable) are given as a guide only and should be checked and confirmed by your solicitor prior to exchange of contracts.



Bishopston Branch
201 Gloucester Road, Bishopston, Bristol, BS7 8BG
Call: 0117 9425855
Mail: bishopstonsales@oceanhome.co.uk
Search: www.oceanhome.co.uk