

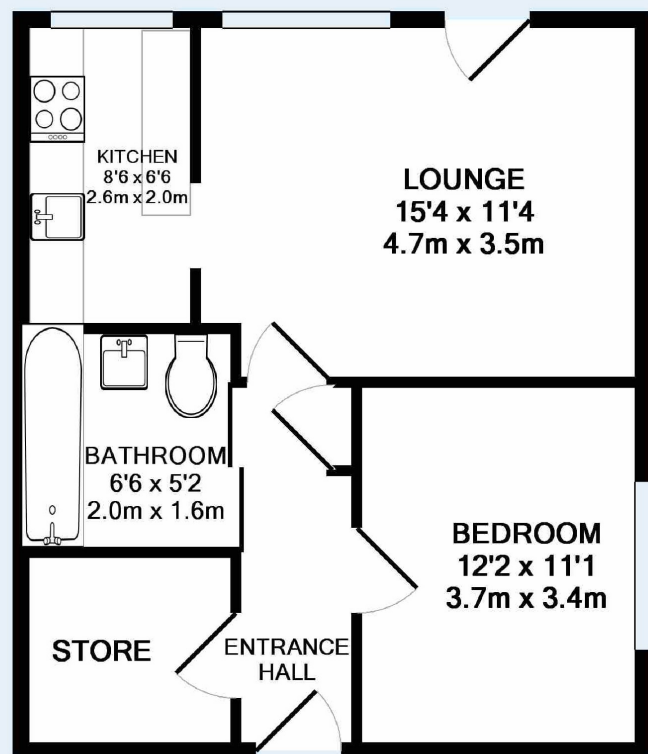


**Lawrence Weston - £143,000**

**1 bed apartment**

**89 Orlebar Garden, BS11 0TB**





Made with Metropix ©2017



An excellent and rare opportunity to purchase this one bedroom top floor apartment located in Orlebar Gardens, Lawrence Weston. The location of these apartments is a real plus due to its proximity to the woodlands of Blaise Castle Estate and Kingsweston. The travel links are also a benefit as there are good bus links to Cribbs Causeway and Bristol City Centre, not forgetting the easy access to the M5/M4 motorways. The apartment consists of a bright and spacious living space which consist of, Entrance hall, Storage room, Bathroom, Double bedroom, Lounge and Kitchen. Externally the property has a spacious communal garden along with designated parking.



### Shirehampton Branch

14-16 High Street, Shirehampton, Bristol,  
BS11 0DP

**Call:** 0117 9380611

**Mail:**

**Search:** [oceanhome.co.uk](http://oceanhome.co.uk)

References to the Tenure of a Property are based on information supplied by the Seller. The Agent has not had sight of the title documents. Lease details, service ground rent (where applicable) are given as a guide only and should be checked and confirmed by your solicitor prior to exchange of contracts.