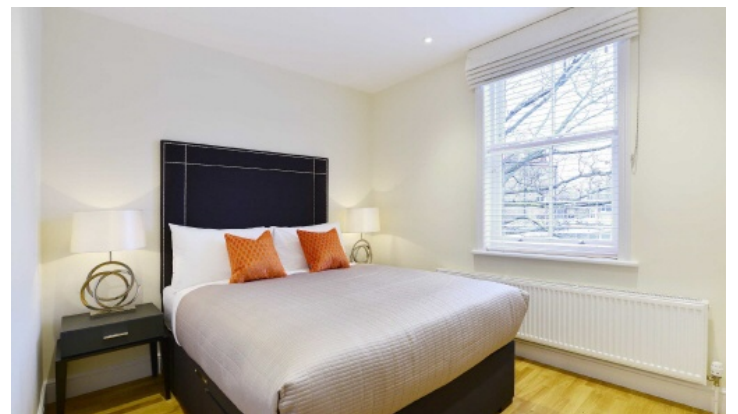


# Chard

Lettings



## Hamlet Gardens, W6

£1,000 pw (£4,333 pcm)

This three bedroom, two bathroom red brick Victorian mansion apartment has been refurbished to a luxurious standard. Hamlet Gardens is perfectly located by Ravenscourt Park where you can enjoy modern living in period surroundings.

Hamlet Gardens is located off Kings Street, close to Hammersmith's local amenities and Ravenscourt Park is on your doorstep. Chiswick is close by offering a variety of cafés and restaurants and stations Ravenscourt Park and Stamford Brooke are moments away.

# Chard

— Lettings —

Chard Fulham  
5 Harwood Road,  
London, SW6 4QP  
020 7384 1400  
[fulhamlettings@chard.co.uk](mailto:fulhamlettings@chard.co.uk)

Energy Rating: C. We aim to make our particulars both accurate and reliable. However they are not guaranteed; nor do they form part of an offer or contract. If you require clarification on any points then please contact us, especially if you're traveling some distance to view. Please note that appliances and heating systems have not been tested and therefore no warranties can be given as to their good working order.

