



## Hurlingham Square, SW6

£915 pw (£3,965 pcm)

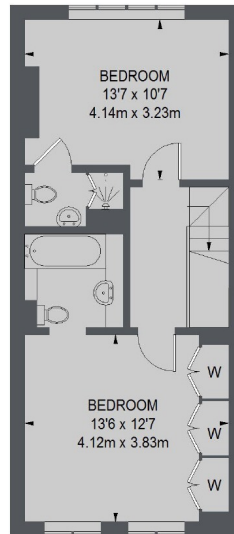
This four bedroom three bathroom house is in a gated development in the Peterborough Estate. The property is split over three floors with a separate kitchen, a spacious reception with access to a private garden, communal grounds and off-street parking.

This sought-after family development is located between South Park and Hurlingham Park off Peterborough Road. Parsons Green is moments away with family friendly restaurants, cafés and boutique retail shops.

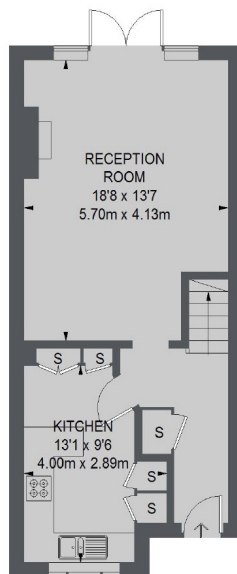
- Four Bedrooms • Spacious Reception • Three Bathrooms •
- Off-Street Parking • Gated Development • Communal Grounds •

# Chard

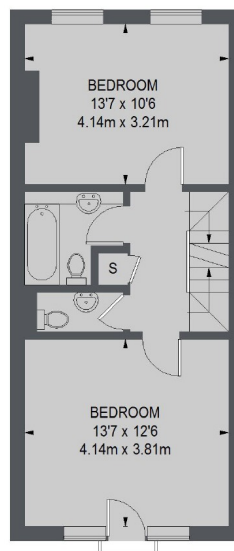
Lettings



**SECOND FLOOR**



**GROUND FLOOR**



**FIRST FLOOR**

TOTAL APPROX. FLOOR AREA 1358 SQ. FT. (126.12 SQ. M.)

Chard Fulham  
5 Harwood Road,  
London, SW6 4QP  
020 7384 1400  
[fulhamlettings@chard.co.uk](mailto:fulhamlettings@chard.co.uk)

Energy Rating: D. We aim to make our particulars both accurate and reliable. However they are not guaranteed; nor do they form part of an offer or contract. If you require clarification on any points then please contact us, especially if you're traveling some distance to view. Please note that appliances and heating systems have not been tested and therefore no warranties can be given as to their good working order.