

ROKSTONE



Montagu Mansions, Marylebone W1U

A stunning two bedroom apartment in a red brick mansion block with 24 hour portage in Marylebone Village.

The contemporary apartment benefits from two spacious bedrooms, two bathrooms and generous living and entertaining space with plenty of storage throughout. The property has recently been refurbished to an impeccably high standard, boasting beautiful interiors, high ceilings and a wine cellar.

Montagu Mansions is ideally situated for the world class amenities of Marylebone Village and the West End, together with the green open spaces of Regent's Park and excellent transport links close by, making this property the perfect investment or pied a terre.

Early viewing is strongly recommended.

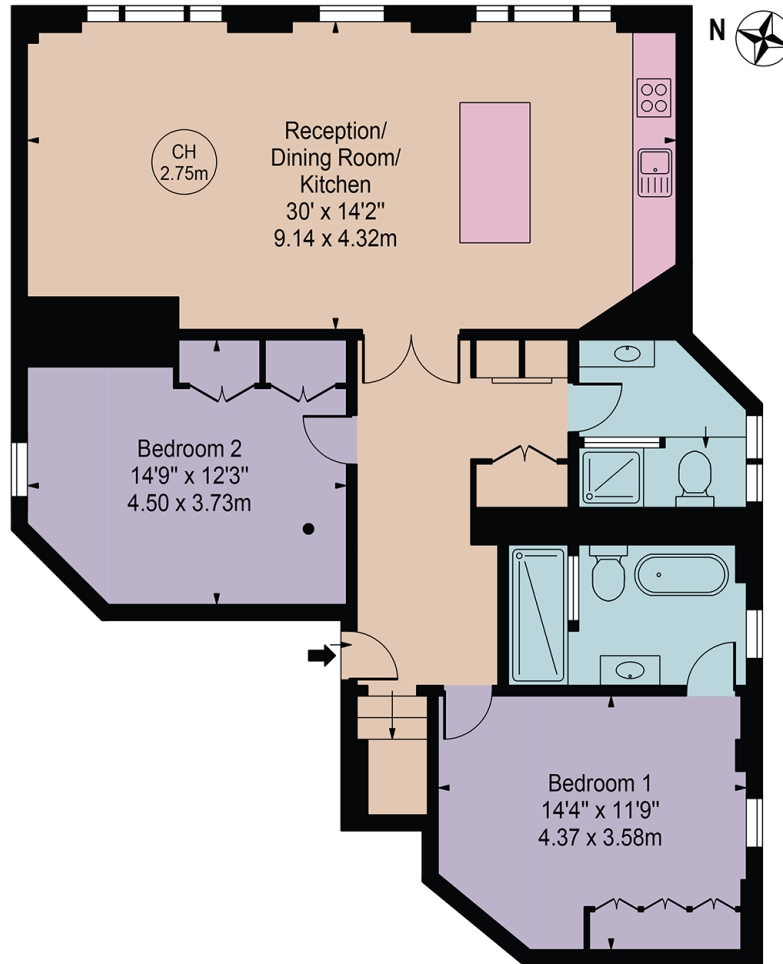
Price £2,500,000



5 Dorset Street London W1U 6QJ
Tel: 020 7580 2030 | Email: enquiries@rokstone.com
<http://www.rokstone.com>

Montagu Mansions

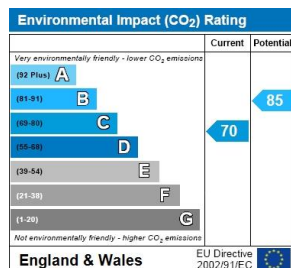
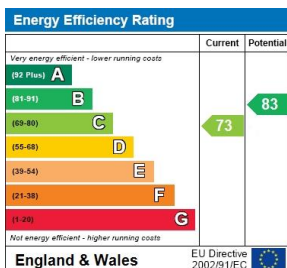
Approx. Gross Internal Area 1102 Sq Ft - 102.38 Sq M



Second Floor
Half Landing

For Illustration Purposes Only - Not To Scale

This floor plan should be used as a general outline for guidance only and does not constitute in whole or in part an offer or contract. Any intending purchaser or lessee should satisfy themselves by inspection, searches, enquiries and full survey as to the correctness of each statement. Any areas, measurements or distances quoted are approximate and should not be used to value a property or be the basis of any sale or let.



Terms

Local Authority: Westminster City Council

Tenure: TBC

Lease: 968

Service Charge: £5,800PA