

# Chard

— Lettings —



## Britannia Road, SW6

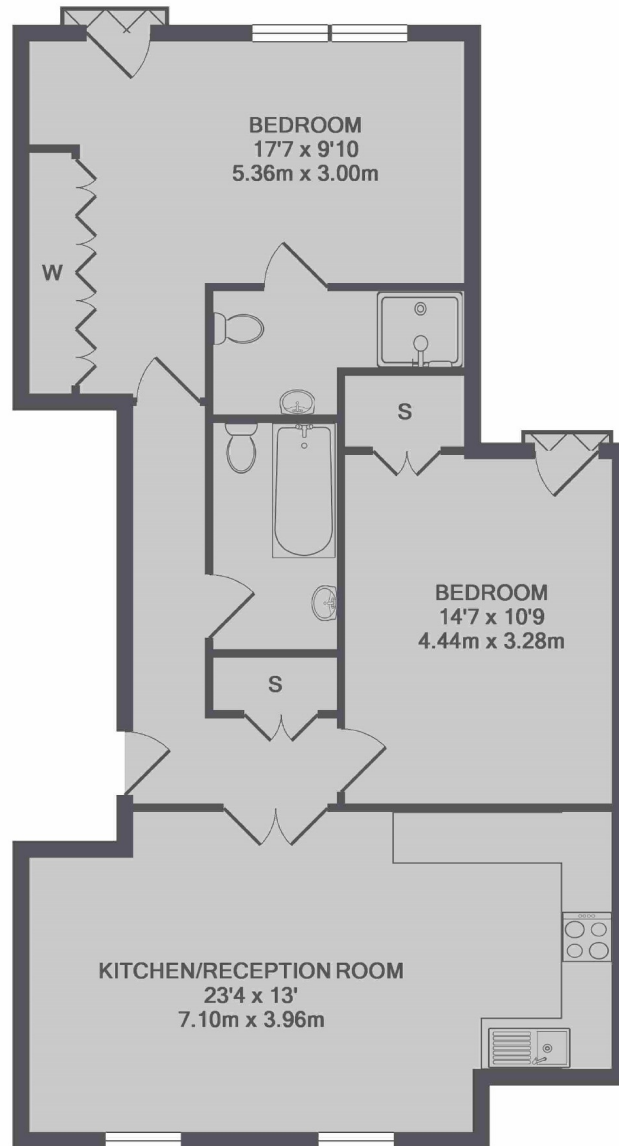
£576 pw (£2,496 pcm)

This two bedroom two bathroom first floor apartment in the Moore Park Estate, has a bright and spacious open-plan living area, a modern fitted kitchen with built-in appliances, wood flooring, integrated audio system and great storage space throughout.

Britannia Road is located off Fulham Road in the Moore Park Estate with excellent transport links leading into Chelsea, the city and Fulham Broadway station is moments away. Fulham offers a great selection of eateries and popular local amenities all on your doorstep.

# Chard

Lettings



TOTAL APPROX. FLOOR AREA 826 SQ.FT. (76.7 SQ.M.)

Chard Fulham  
5 Harwood Road,  
London, SW6 4QP  
020 7384 1400  
[fulhamlettings@chard.co.uk](mailto:fulhamlettings@chard.co.uk)

Energy Rating: B. We aim to make our particulars both accurate and reliable. However they are not guaranteed; nor do they form part of an offer or contract. If you require clarification on any points then please contact us, especially if you're traveling some distance to view. Please note that appliances and heating systems have not been tested and therefore no warranties can be given as to their good working order.