



## Glenister Park Road, SW16

£565,000

A well presented three bedroom family home, this 1930's house is located on a popular residential street and has been finished to a high standard by the current owners.

- Three Bedrooms
- Open Plan
- Terraced House
- Excellent Condition
- Private Garden
- Freehold





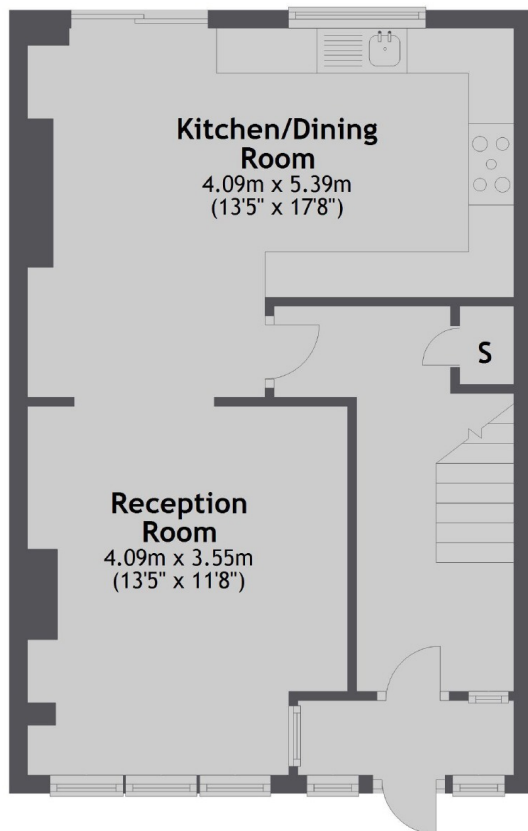
Glenister Park Road is a residential road positioned perfectly for those looking to keep their commute to a minimum with Streatham Common Rail Station being a short distance away offering links to both Clapham Junction and London Victoria.



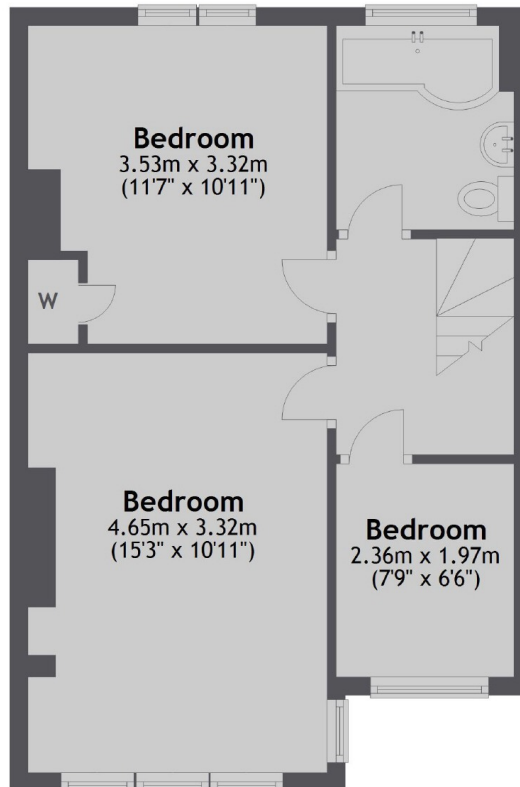




### Ground Floor



### First Floor



Total area: approx. 87.0 sq. metres (936.5 sq. feet)

Jacksons Streatham  
1-3 De Montfort Parade  
Streatham High Road  
Streatham  
London  
SW16 1BU

Energy Rating: E We aim to make our particulars both accurate and reliable. However they are not guaranteed; nor do they form part of an offer or contract. If you require clarification on any points then please contact us, especially if you're traveling some distance to view. Please note that appliances and heating systems have not been tested and therefore no warranties can be given as to their good working order.