

TATES

Residential Sales & Lettings

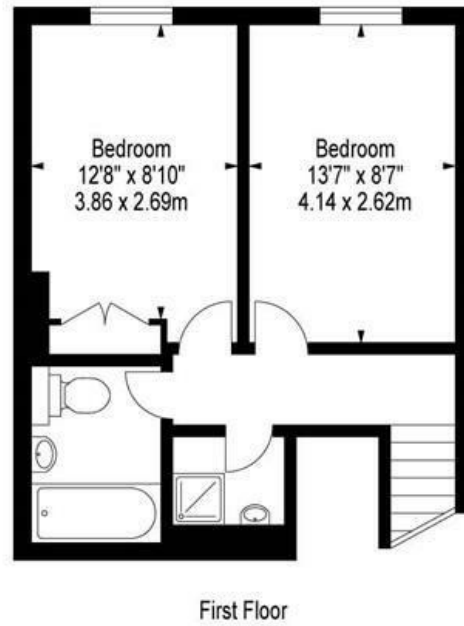
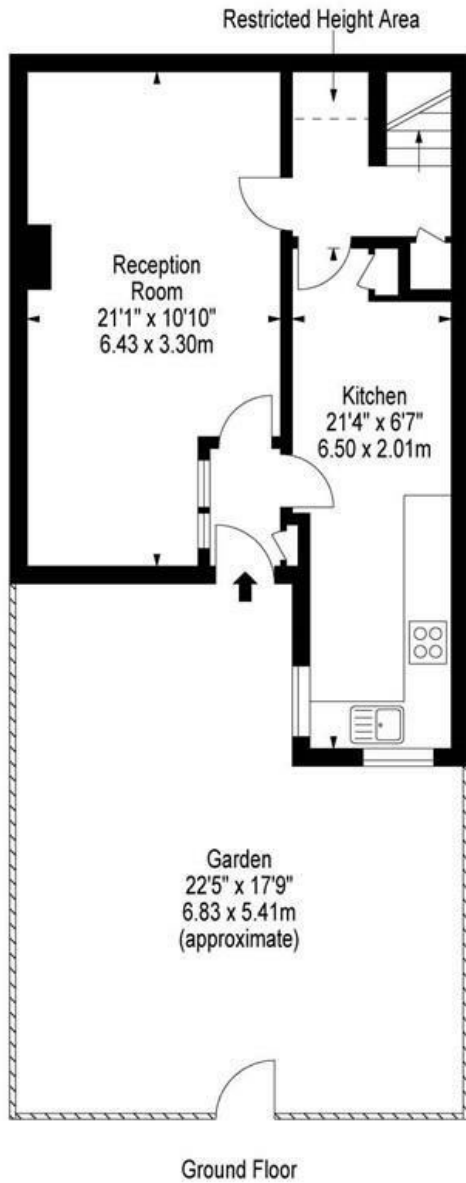


Lily Close, St Pauls Court, London W14 9YB

£520 Per week

- 2 double bedrooms
- Gated development
- Newly refurbished throughout
- Communal gardens
- Close to Barons Court Tube
- 2 bathrooms
- Heating and hot water inclusive of rent
- Available start of September
- 24 hour security
- Energy Efficiency Rating Current Band: C

Lily Close, St. Pauls Court
London W14



Approx Gross Internal Area **793 Sq Ft - 73.67 Sq M**
Floor Plan Supplied For Identification Purposes Only And May Not Be Accurate
Floor Plan by www.elegantmediasolution.com

Whilst these particulars are believed to be correct, no guarantee can be given for the measurements, appliances or services. It is our recommendation that all are tested. These are not intended to form part of any contract. Tate's accept no responsibility for their accuracy.

Energy Efficiency Rating		
	Current	Potential
Very energy efficient - lower running costs		
(92 plus) A		
(81-91) B		
(69-80) C		
(55-68) D		
(39-54) E		
(21-38) F		
(1-20) G		
Not energy efficient - higher running costs		
England & Wales <small>EU Directive 2002/91/EC</small>		

135 Hammersmith Rd London W14 0QL

T. 020 7602 6020 F. 020 7602 9522

mail@tatesestates.co.uk

tatesestates.co.uk

Tates (Agents) Ltd. Registered in England and Wales No. 2356337
Registered Office: 4th Floor Imperial House, 15 Kingsway London WC2B 6U

