



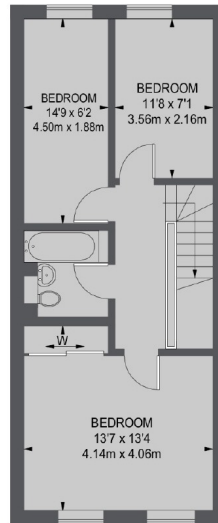
## Hogarth Close, W5

£680 pw (£2497 pcm)

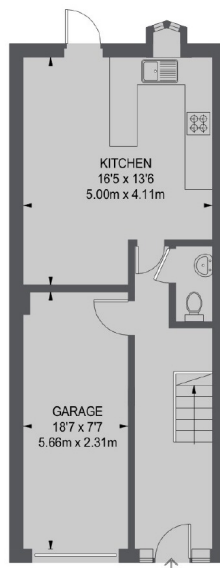
A four bedroom, two bathroom home with a south facing garden. This modern townhouse also offers off-street parking, downstairs cloakroom, south-facing living room and a separate kitchen with dining area.

Hogarth Close is a private road within half a mile of North Ealing, and Hanger Lane, and less than a mile to Ealing Broadway.

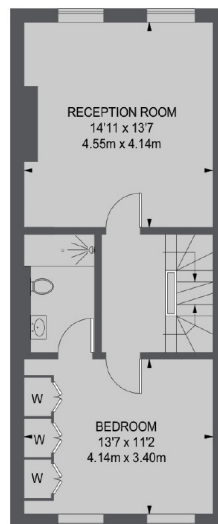
- Four Bedrooms • Two Bathrooms • South Facing Garden •
- Downstairs Cloakroom • Garage • Ealing Broadway Station •



SECOND FLOOR



GROUND FLOOR



FIRST FLOOR

TOTAL APPROX. FLOOR AREA  
(INCLUDING GARAGE)  
1467 SQ. FT. (136.3 SQ. M.)

Robertson Smith & Kempson Ealing Lettings  
1 The Broadway, London, W5  
2NT  
020 8840 7885  
[ealinglettings@robertsonsmithandkempson.co.uk](mailto:ealinglettings@robertsonsmithandkempson.co.uk)

Energy Rating: C. We aim to make our particulars both accurate and reliable. However they are not guaranteed; nor do they form part of an offer or contract. If you require clarification on any points then please contact us, especially if you're traveling some distance to view. Please note that appliances and heating systems have not been tested and therefore no warranties can be given as to their good working order.