



4 Church Street
Pewsey, SN9 5DL



4 Church Street, Pewsey, SN9 5DL

A cosy and secluded two bedroom cottage set in the heart of Pewsey, ideal for first time buyers or investors.

- Well Presented
- End Terraced
- Period Cottage
- Character Features
- Open Fireplace
- Close to Train Station
- Courtyard Garden
- Walking Distance to High St

Guide Price £160,000



Description

INVESTMENT PURCHASE WITH TENANT IN SITU. Set in a secluded spot within walking distance of the High Street this lovely two bedroom character cottage is achieving a current rental of £600 pcm (4.2% yield).

The living room has a brick fireplace with log burning stove and French doors to the paved courtyard garden. The kitchen is fitted with a matching range of wall and base units with work surfaces over and inset stainless steel sink. Built in oven and hob with extractor over, space and plumbing for washing machine and dishwasher. The first floor has a main bedroom, a single bedroom/ study and a bathroom fitted with a white suite comprising bath with shower over, low level W.C, pedestal wash basin and heated towel rail.

Situation

The property is conveniently located within the village of Pewsey with a mainline train station (London Paddington is reachable in just over an hour) and good local shopping including a supermarket, a post office, a library, various smaller shops and restaurants. It is also on the main bus route from Swindon to Salisbury. There is a large modern village hall, doctor's surgery, dental practises, leisure centre, primary & secondary schools. More extensive facilities, including national retailers, are found in the nearby market towns of Marlborough, Hungerford and Devizes. The major commercial centres of Andover, Newbury and Swindon as well as the M4 and M3 motorways are all within easy reach.

Property Information

Tenure: Freehold

Local Authority: Wiltshire Council

Council Tax Band: B

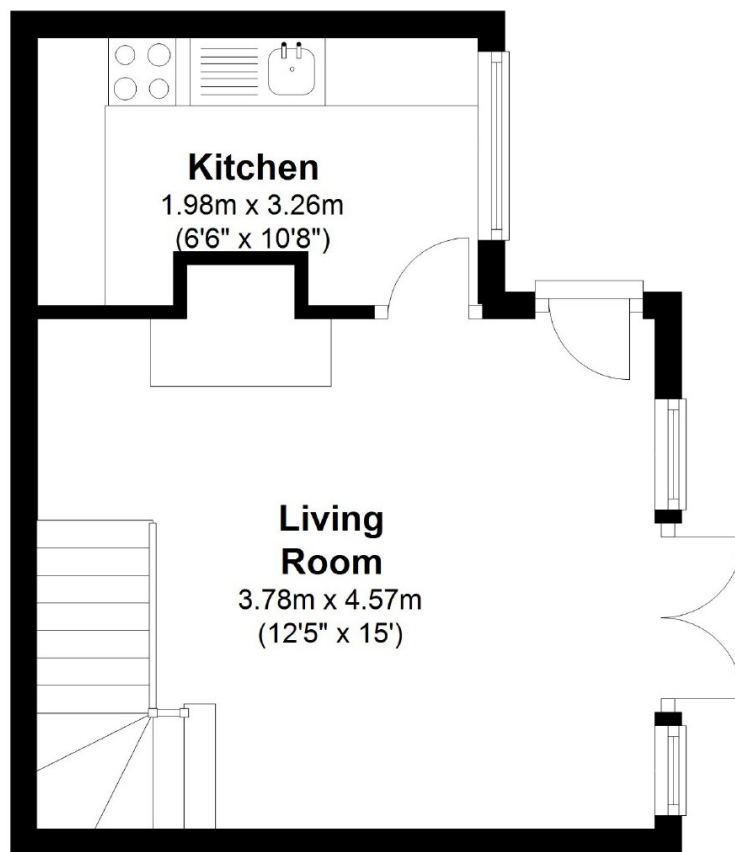
EPC: E

Mains water, electricity and drainage are connected. Electric Heating. Double glazing



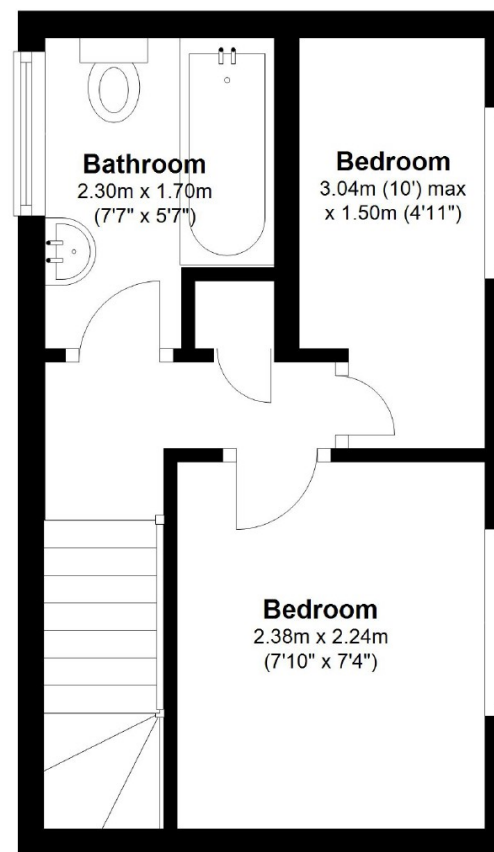
Ground Floor

Approx. 24.1 sq. metres (258.9 sq. feet)



First Floor

Approx. 18.4 sq. metres (197.7 sq. feet)



Total area: approx. 42.4 sq. metres (456.6 sq. feet)

6 / 7 Market Place, Devizes, Wiltshire, SN10 1HT
Tel: 01380 723451
Fax: 01380 729198
Email: devizes@strakers.co.uk

www.strakers.co.uk

■ Chippenham
■ Corsham

■ New Homes
■ Malmesbury

■ Swindon
■ Devizes

■ Auction
■ Lettings