

Chard

Lettings



New Kings Road, SW6

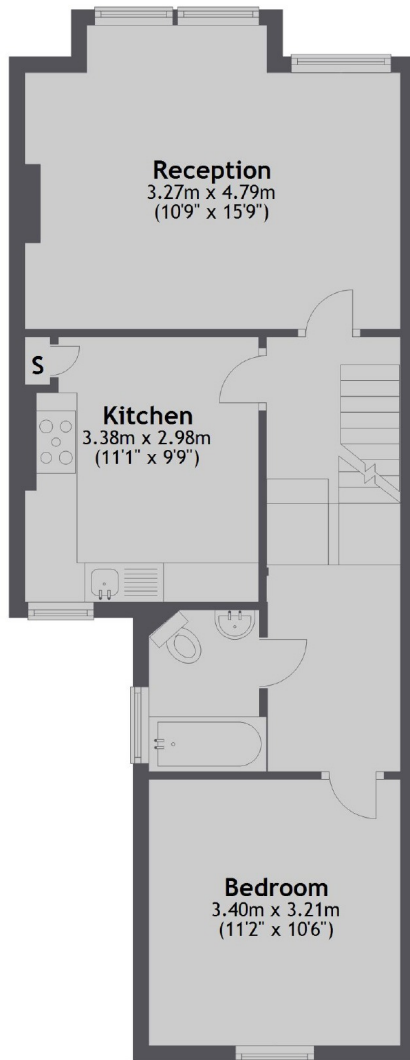
£495 pw (£2,145 pcm)

This newly redecorated two bedroom, two bathroom, split-level period conversion on New Kings Road is close to all transport and local amenities. The property has two double bedrooms, one with en suite, a spacious reception room and a separate eat-in kitchen.

New Kings Road is close to Putney Bridge and Parsons Green stations, with many bus routes leading into Putney and the city. There is also a variety of local amenities nearby and a selection of boutique restaurants, cafés and bars all on your doorstep.

Spacious Reception Two Double Bedroom Separate Eat-In
Kitchen
Two Bathrooms Split-Level Good Storage

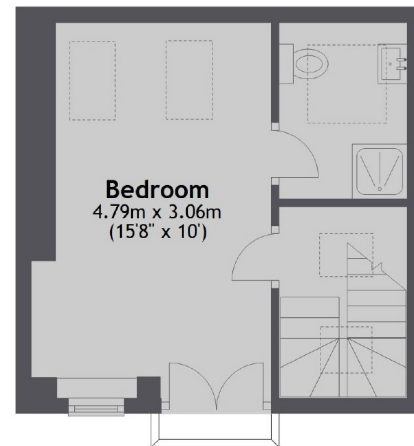
First Floor



Ground Floor



Second Floor



Total area: approx. 75.8 sq. metres (815.4 sq. feet)

Chard Fulham
5 Harwood Road,
London, SW6 4QP
020 7384 1400
fulhamlettings@chard.co.uk

Energy Rating: . We aim to make our particulars both accurate and reliable. However they are not guaranteed; nor do they form part of an offer or contract. If you require clarification on any points then please contact us, especially if you're traveling some distance to view. Please note that appliances and heating systems have not been tested and therefore no warranties can be given as to their good working order.