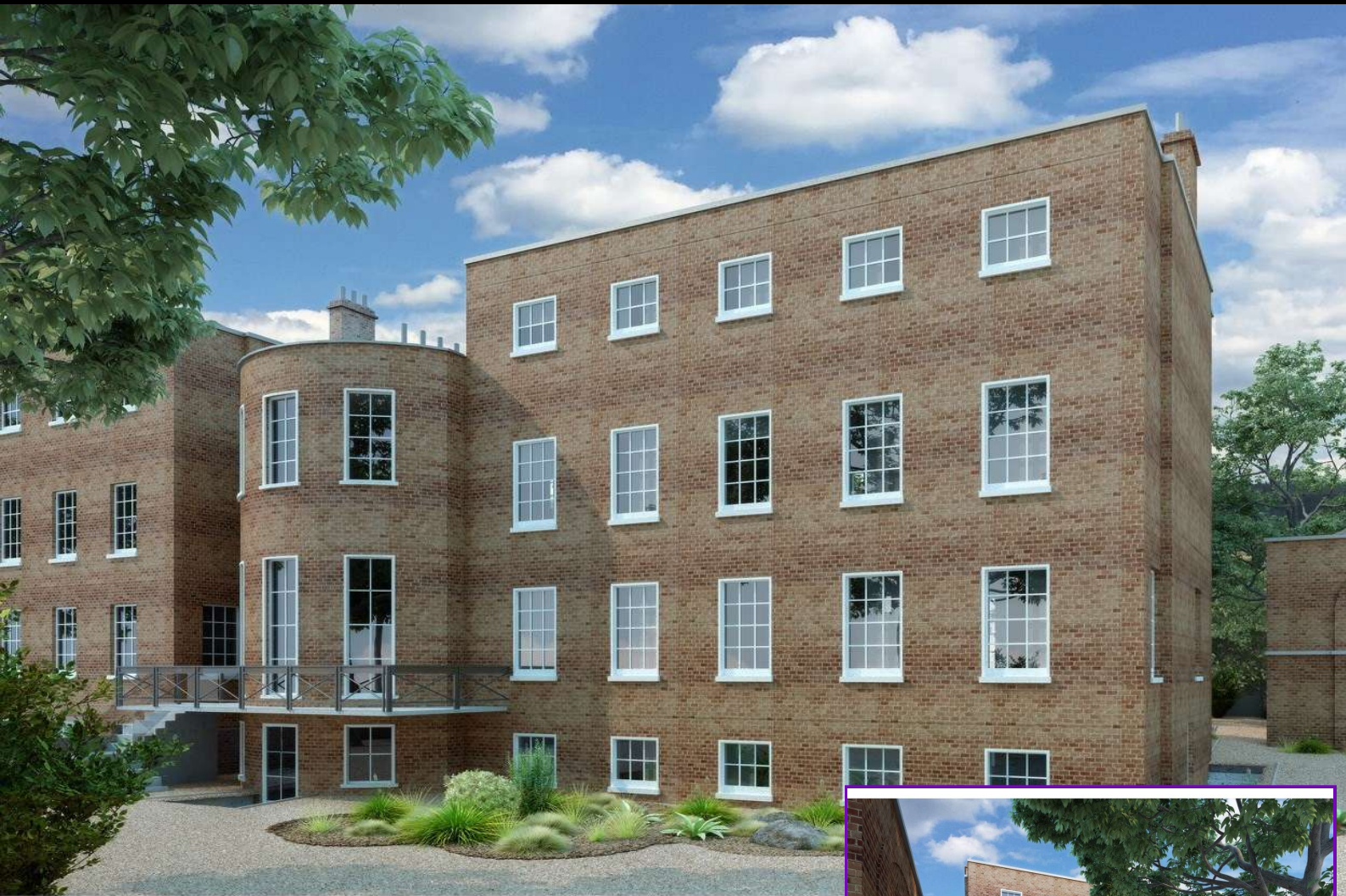


ROKSTONE



Lambeth Road Kennington SE1

A Former Rectory property at Lambeth Palace currently being restored and due for completion in October 2019, the property will comprise of a 14,000 sqft detached mansion in the centre of London set in just under half an acre of grounds completely walled with double gated in out carriage drive entrance. The mansion will be set over five floors served by grand cantilever Stair case and passenger lift. A subterranean pool and Spa complex will be created under the property totalling 5000 sqft including a cinema and further staff accommodation. In addition to the main house, the original detached Carriage house has been restored to create Garaging for 4 cars with two staff apartments above. In addition to the garaging there will be parking at the front of the mansion for up to 10 cars. Palace House backs directly on to the 10 acre Archbishop's Park that is closed at night to the public and includes sports facilities such as tennis courts.

Palace House is one of only a few Rectory Properties built by the Church of England at important strategic points along the River Thames in central London for very Senior Clerics of the Church.

Price £29,500,000

Terms
Local Authority: London Borough Of
Lambeth
Tenure: TBC



5 Dorset Street London W1U 6QJ
Tel: 020 7580 2030 | Email: enquiries@rokstone.com
<http://www.rokstone.com>

ROKSTONE