

ROKSTONE



Lowndes Place Belgravia SW1X

A charming family house with period features in a prime Belgravia location on a quiet street, nestled between Chesham Place and Eaton Place. The property is low built and arranged over four floors. Benefiting from a modern separate kitchen, dining room, first floor reception room with balcony, master bedroom with en-suite bathroom and dressing room. There are two further bedrooms with their own bathrooms on the upper floors. On the lower floor there is another spacious bedroom with en suite bathroom and built in storage, gym/cinema room and utility room with separate washing machine and tumble dryer. The property is located close to the amenities of both Motcombe Street and Elizabeth Street with many cafe`s and boutiques as well as a large Waitrose. The transport links of Knightsbridge(0.6 miles) and Sloane Square (0.4 miles) are within walking distance.

Price £3,450 pw

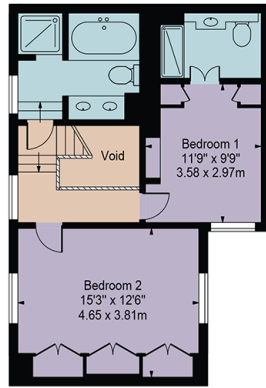


Olivia McSweeney | Head of Lettings
D: 020 3219 5679 | M: 07584633058 | E: olivia@rokstone.com
5 Dorset Street, London, W1U 6QJ

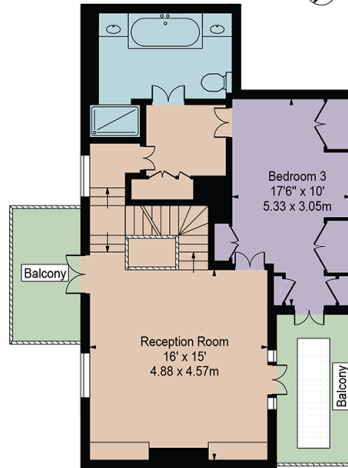
ROKSTONE

Lowndes Place

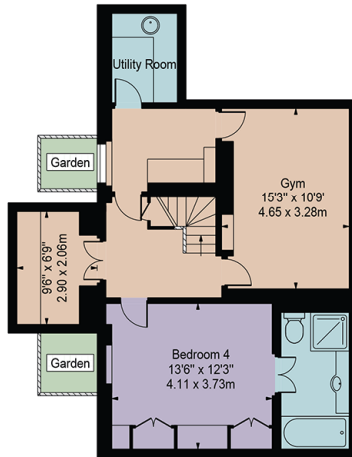
Approx. Gross Internal Area 2732 Sq Ft - 253.81 Sq M
 (Excluding Void)
 Approx. External Area 372 Sq Ft - 34.56 Sq M
 (Including Garden & Balconies)



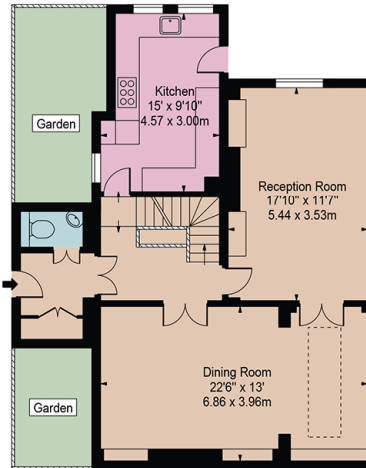
Second Floor



First Floor



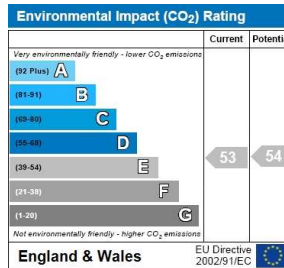
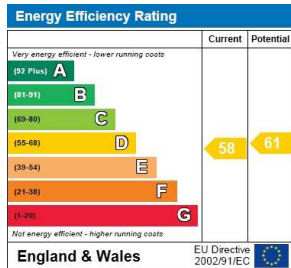
Lower Ground Floor



Ground Floor

For Illustration Purposes Only - Not To Scale

This floor plan should be used as a general outline for guidance only and does not constitute in whole or in part an offer or contract. Any intending purchaser or lessee should satisfy themselves by inspection, searches, enquiries and full survey as to the correctness of each statement. Any areas, measurements or distances quoted are approximate and should not be used to value a property or be the basis of any sale or let.



Olivia McSweeney | Head of Lettings
 D: 020 3219 5679 | M: 07584633058 | E: olivia@rokstone.com
 5 Dorset Street, London, W1U 6QJ