

ROKSTONE



Kenrick Place Marylebone W1U

A charming two bedroom Mews House situated within the heart of Marylebone Village. This spacious freehold property comprises of two en-suite bedrooms, a first floor reception room and kitchen and garage, making it the perfect investment or pied-a-terre.

Situated in this quiet, cobbled mews which lies between Dorset Street and Paddington Street, this property is ideally located moments from all the boutique shops, restaurants and amenities of Marylebone high street and just a short walk from the green open spaces of Regents Park and Hyde Park. With fantastic transport links due to its close proximity to Baker Street and Marylebone Underground Station and the A40/M40.

Price £2,000,000

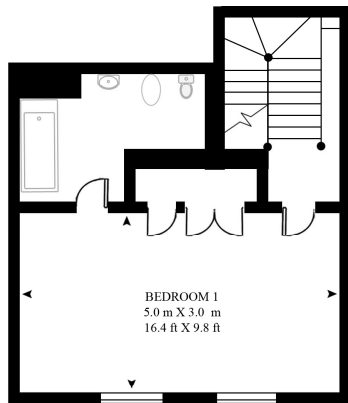


5 Dorset Street London W1U 6QJ
Tel: 020 7580 2030 | Email: enquiries@rokstone.com
<http://www.rokstone.com>

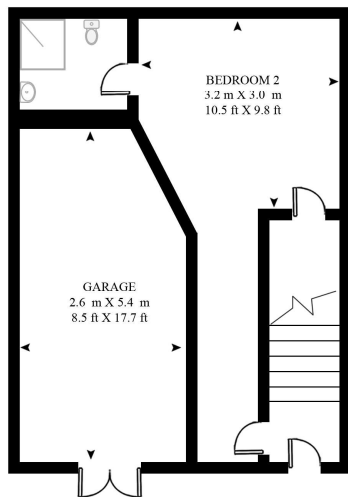
ROKSTONE

KENRICK PLACE

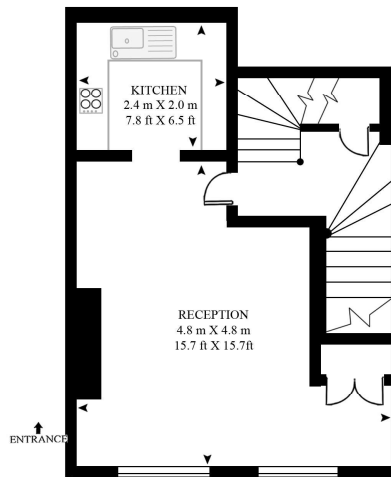
APPROXIMATE GROSS INTERNAL FLOOR AREA 998 SQ.FT (92.8 SQ.M)



SECOND FLOOR



GROUND FLOOR

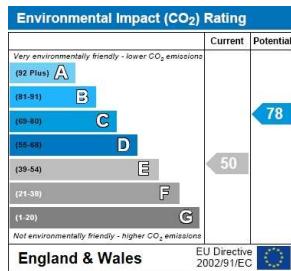
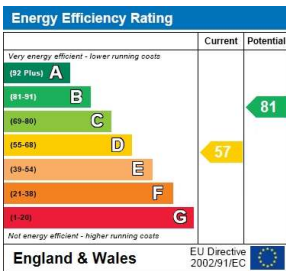


FIRST FLOOR



This floor plan has been defined by the RICS Code of Measurement. This floor plan and all others are for approximate representative purposes only and upon usage is agreed to as such by the client.

WWW: hdvirtualart.com | TEL: 0207 947 4014 | EMAIL: info@hdvirtualart.com



Terms

Local Authority: Westminster City Council

Tenure: TBC

Lease: 0

Service Charge: £OPA

Ground Rent: £OPA

5 Dorset Street London W1U 6QJ

Tel: 020 7580 2030 | Email: enquiries@rokstone.com

http://www.rokstone.com