

## PRINCE REGENT COURT, NW8 7RB £1,750pw / £7,583pm Unfurnished

A recently refurbished apartment (1872sqft/174sqm) situated within this highly regarded contemporary building located on the prestigious Avenue Road within 200 metres of Regents Park. The property benefits from air conditioning, wood flooring to all principle rooms, secure underground garage parking, 24hr portorage and features a magnificent reception room with direct access to a terrace

Master Bedroom Suite | Second Bedroom with En Suite Bathroom | Bedroom Three/Study | Guest WC | Reception Room | Fitted Kitchen | Independent Gas Central Heating | Underground Parking Space | Airconditioning to Reception Room & Bedrooms | Garage | Independent Heating | Patio Garden | Portorage

[winkworth.co.uk/st-johns-wood](http://winkworth.co.uk/st-johns-wood)

**Winkworth**

See things differently.

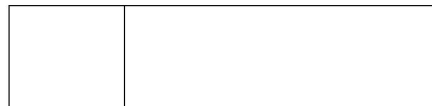
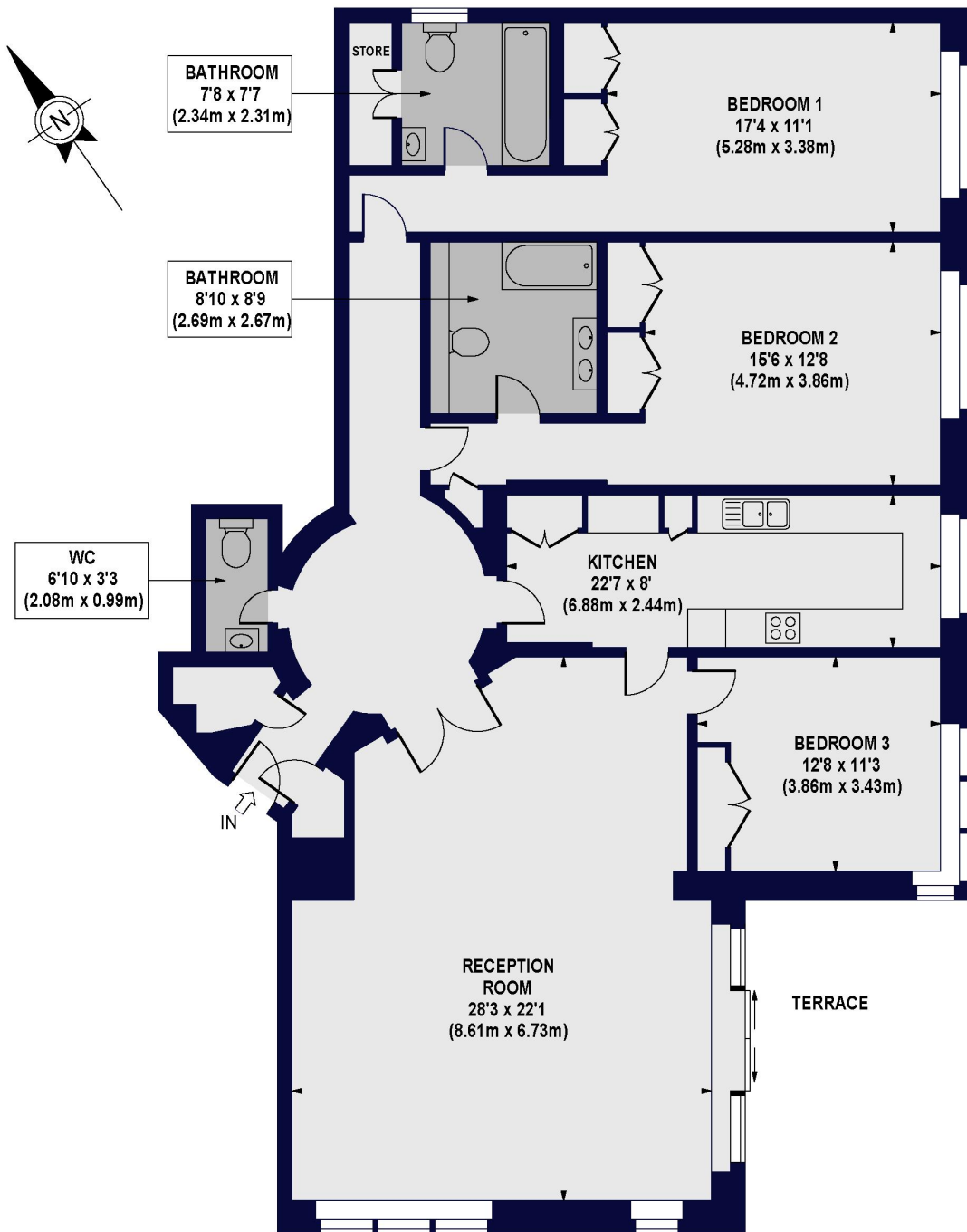






# PRINCE REGENT COURT, ST JOHNS WOOD, NW8 7RB

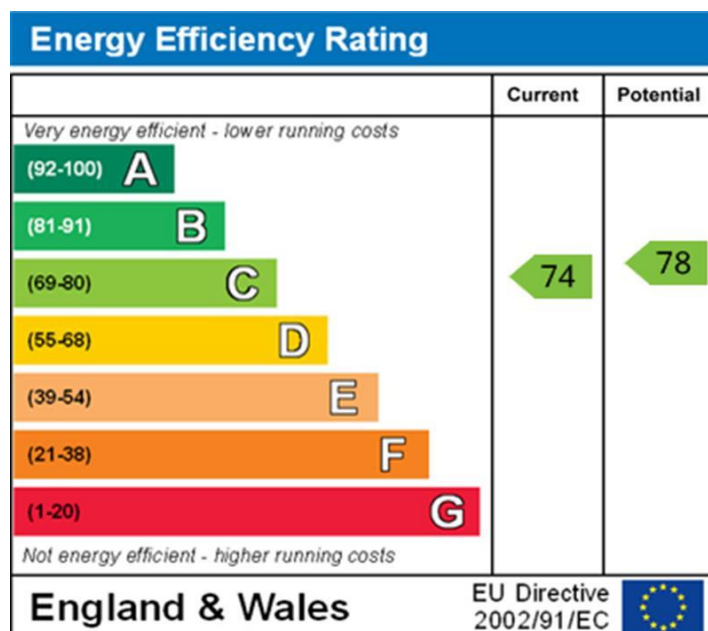
Approx. Gross Internal Floor Area 1872 sq ft. / 174 sq.m



## GROUND FLOOR

For Illustration Purposes Only - Not To Scale - Floor Plan by [www.nogaphotostudio.com](http://www.nogaphotostudio.com) Ref: No.34605  
This floor plan should be used as a general outline for guidance only. Any intending purchaser or lessee should satisfy themselves by inspection, searches, enquiries and full survey as to the correctness of each statement. Any areas, measurements or distances quoted are approximate and should not be used to value a property or be the basis of any sale or let.

**Winkworth**



NB: These particulars are not an offer or contract, nor part of one. You should not rely on statements by Winkworth in the particulars or by word of mouth or in writing "information" as being factually accurate about the property, its condition or its value. Neither Winkworth nor any joint agent has any authority to make any representations about the property, and accordingly any information given is entirely without responsibility on the part of the agents, seller(s) or lessor(s). These particulars are prepared on the basis of the information supplied by our client and are a rough guide for information only. The photographs show only certain parts of the property. We are not able to check all of the information and therefore are unable to guarantee accuracy. All interested parties are therefore advised to undertake all necessary inspections and checks that they deem appropriate. Where displayed, the square footage is taken from the floor plans, which are created by an independent supplier. These measurements are approximate and included for illustrative purposes only. The measurements may vary. Winkworth does not make any representation as to the accuracy of these measurements and you should seek to verify them for yourself. Winkworth accept no liability for any loss you may suffer if you rely on these measurements. All fixtures and fittings, whether fitted or not are deemed removable by the vendor unless stated. Any reference to alterations to, or use of, any part of the property does not mean that any necessary planning, building regulations or other consent has been obtained. Amenities and appliances have not been tested.

St John's Wood | 103-104 St John's Wood Terrace, London NW8 6PL  
020 7586 7001 | [stjohnswood@winkworth.co.uk](mailto:stjohnswood@winkworth.co.uk)

[winkworth.co.uk/st-johns-wood](https://www.winkworth.co.uk/st-johns-wood)

**Winkworth**

See things differently.