



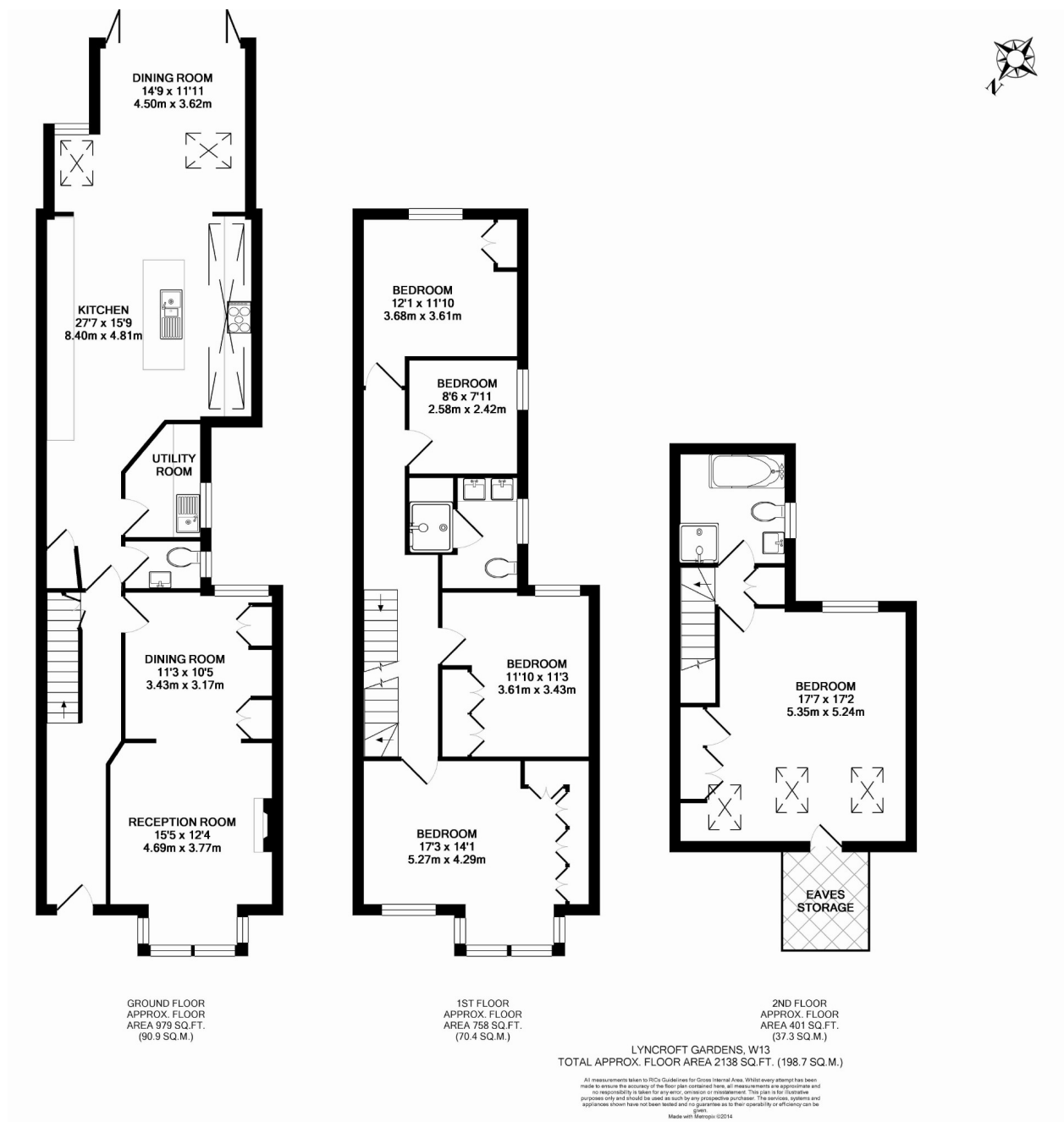
## **Lyncroft Gardens, W13**

**£785 pw (£3,400 pcm)**

This stunning five bedroom family home has two reception rooms with feature fireplaces, a utility room, separate cloakroom and a large kitchen/diner with bi-folding doors that open onto a south-facing landscaped garden.

Lyncroft Gardens is convenient for both Northfields and Ealing Broadway tube stations and offers easy access to the M4 and Heathrow.

- Five Bedrooms • Two Reception Rooms • Two Bathrooms •
- Off-Street Parking • South-Facing Garden • Popular Location •



Robertson Smith & Kempson Northfields Lettings  
116 Northfield Avenue, London,  
W13 9RT  
020 8280 2800  
northfieldslettings@robertsonsmithandkempson.co.uk

Energy Rating: F. We aim to make our particulars both accurate and reliable. However they are not guaranteed; nor do they form part of an offer or contract. If you require clarification on any points then please contact us, especially if you're traveling some distance to view. Please note that appliances and heating systems have not been tested and therefore no warranties can be given as to their good working order.