



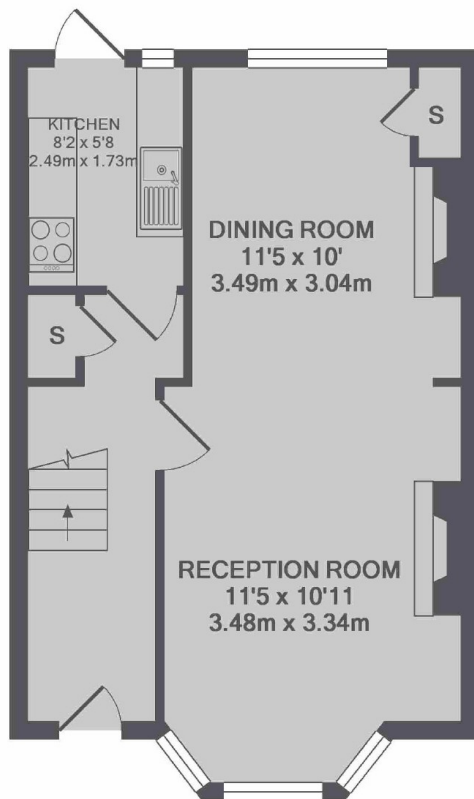
## Salisbury Road, W13

£675,000

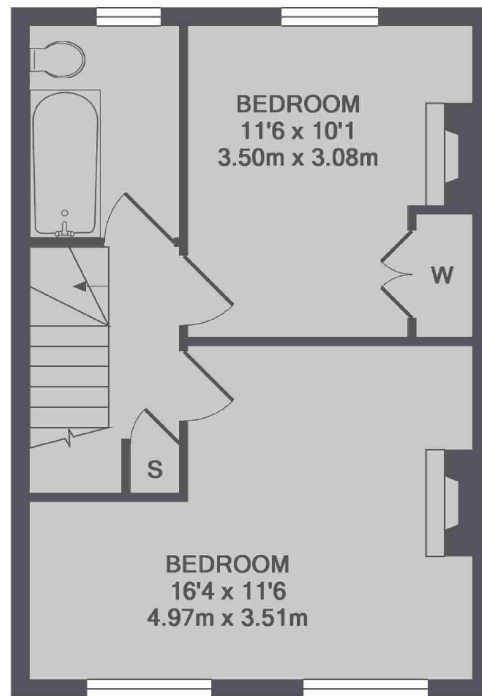
Two bedroom Victorian cottage in the heart of Northfields. Retains original charm and character features. Potential for extension.

Located close to Northfields (Piccadilly Line) tube and Fielding Primary.

- Victorian Cottage • Original Features • Two Bedrooms •
- Landscaped Garden • Piccadilly Line • Close To Fielding Primary



GROUND FLOOR



1ST FLOOR

TOTAL APPROX. FLOOR AREA 780 SQ.FT. (72.5 SQ.M.)

Robertson Smith & Kempson Northfields Sales  
116 Northfield Avenue,  
London, W13 9RT  
020 8566 2340  
[northfieldssales@robertsonsmithandkempson.co.uk](mailto:northfieldssales@robertsonsmithandkempson.co.uk)

Energy Rating: D. We aim to make our particulars both accurate and reliable. However they are not guaranteed; nor do they form part of an offer or contract. If you require clarification on any points then please contact us, especially if you're traveling some distance to view. Please note that appliances and heating systems have not been tested and therefore no warranties can be given as to their good working order.