



51 Queen Charlotte Street, BS1 4HQ

City Centre



Built in 1869 by Archibald Ponton and William Venn Gough, The Granary is a perfect example of Bristol Byzantine style. Originally built as a Granary but later used as offices and a famous nightclub, The Granary is a central part of Bristol harbour's rich heritage.

Flat 8 is located on the fifth floor and is accessible by lift or stairs. This characterful two double bedroom property offers oak flooring and exposed original brickwork giving an industrial feel throughout.

- Stunning 5th floor apartment
- Two double bedrooms
- Bathroom and ensuite
- Lift
- Permit parking on application
- Floor Area 104m sq/ 1119sq ft
- (taken from EPC)
- Energy rating - D



Accommodation

Lounge/Diner

Spacious living area with four windows and oak flooring.

Kitchen

Modern kitchen with integrated appliances and door to utility room.

Bedroom 1

Large master bedroom with three windows and space for wardrobes

Ensuite

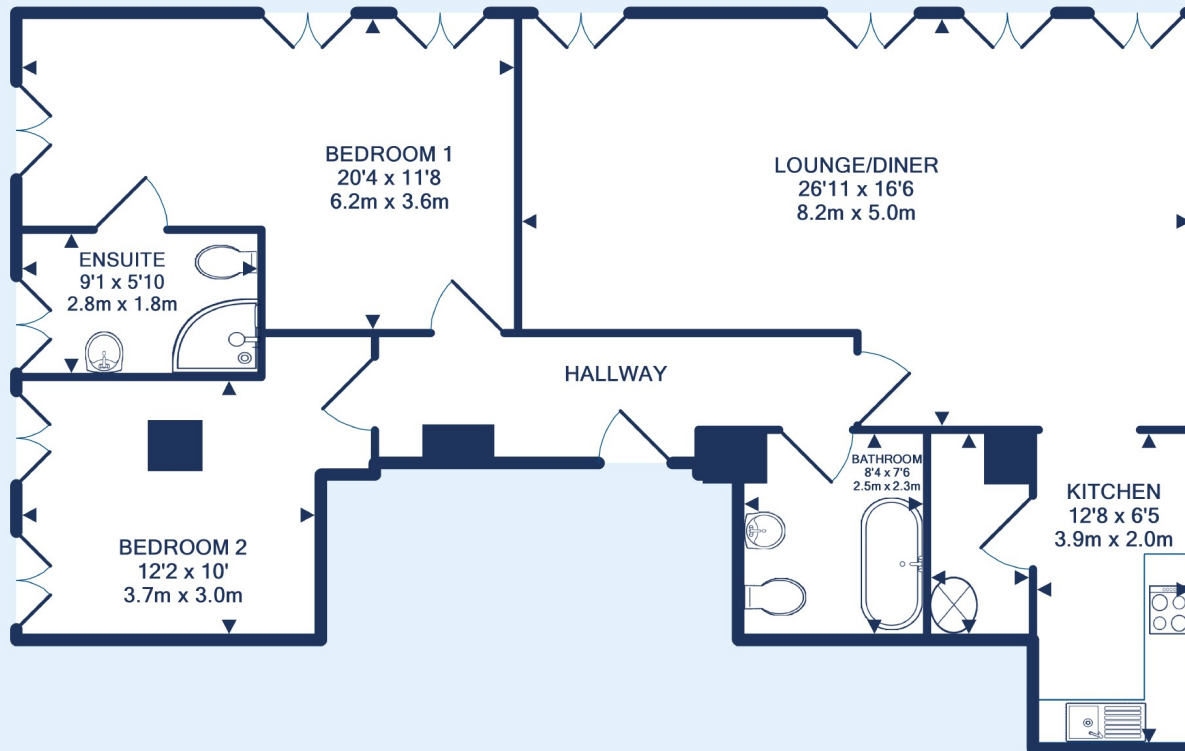
Sizeable walk in shower and window.

Bedroom 2

Double bedroom with two windows.

Bathroom

Modern bathroom with white suite.





City Centre - Guide price £330,000

2 Bed Flat

References to the Tenure of a Property are based on information supplied by the Seller. The Agent has not had sight of the title documents. Lease details, service ground rent (where applicable) are given as a guide only and should be checked and confirmed by your solicitor prior to exchange of contracts.



Clifton Branch
187 Whiteladies Road, Clifton, Bristol, BS2 2RY

Call: 0117 9466007

Mail: cliftonsales@oceanhome.co.uk

Search: www.oceanhome.co.uk