

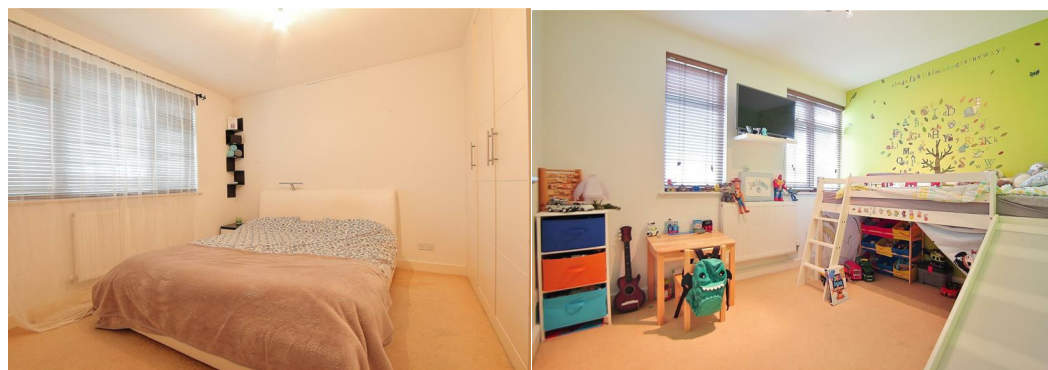
## Woodlands Road, Isleworth, Middlesex TW7 6JT

Spacious and modern two double bedroom apartment with private balcony. Offering spacious living area with modern fitted kitchen, two spacious bedrooms, and modern bathroom with separate shower. Parking is readily available immediately outside the property, and is conveniently located just five minutes walk to Isleworth Rail Station.

**£1,250 PER MONTH**

Energy Efficiency Rating		
	Current	Potential
Very energy efficient - lower running costs		
(92 plus) A		
(81-91) B		
(69-80) C	78	78
(55-68) D		
(39-54) E		
(21-38) F		
(1-20) G		
Not energy efficient - higher running costs		
<b>England &amp; Wales</b>	EU Directive 2002/91/EC	

Environmental Impact (CO <sub>2</sub> ) Rating		
	Current	Potential
Very environmentally friendly - lower CO <sub>2</sub> emissions		
(92 plus) A		
(81-91) B		
(69-80) C	80	81
(55-68) D		
(39-54) E		
(21-38) F		
(1-20) G		
Not environmentally friendly - higher CO <sub>2</sub> emissions		
<b>England &amp; Wales</b>	EU Directive 2002/91/EC	



6 South Street, Isleworth, TW7 7BG  
 Tel: 0208 568 4433  
 info@oakhillagents.co.uk  
 www.oakhillagents.co.uk

OAKHILL