



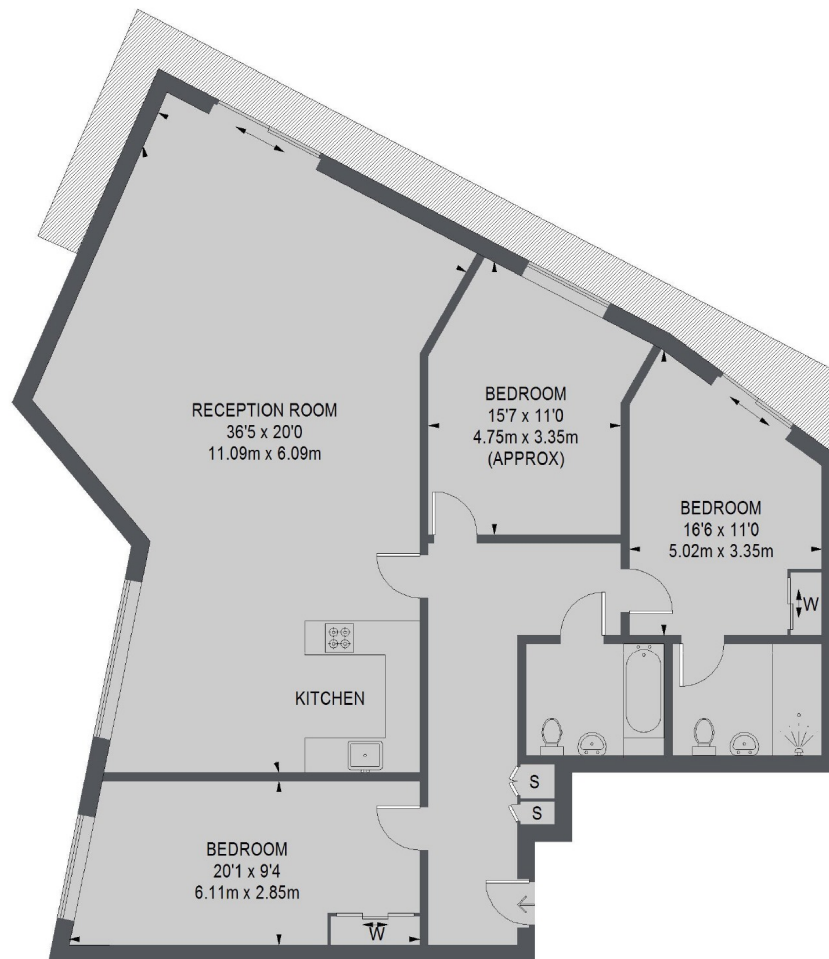
Juniper Drive, SW18

£800 pw (£3,467 pcm)

This three bedroom, seventh floor modern apartment offers a private balcony with stunning river views and excellent facilities including concierge, residents gym, communal grounds, local amenities and underground parking.

Battersea Reach is a sought-after riverside development, with excellent links into the city, Fulham and Chelsea. There is a selection of restaurants, local shops and The River Thames on your doorstep including the river taxi, this really is modern living.

- Three Bedrooms • Two Bathrooms • Open-Plan •



TOTAL APPROX. FLOOR AREA
1459 SQ. FT. (135.52 SQ. M.)

Chard Fulham
5 Harwood Road,
London, SW6 4QP
020 7384 1400
fulhamlettings@chard.co.uk

Energy Rating: C. We aim to make our particulars both accurate and reliable. However they are not guaranteed; nor do they form part of an offer or contract. If you require clarification on any points then please contact us, especially if you're traveling some distance to view. Please note that appliances and heating systems have not been tested and therefore no warranties can be given as to their good working order.